



Wettands

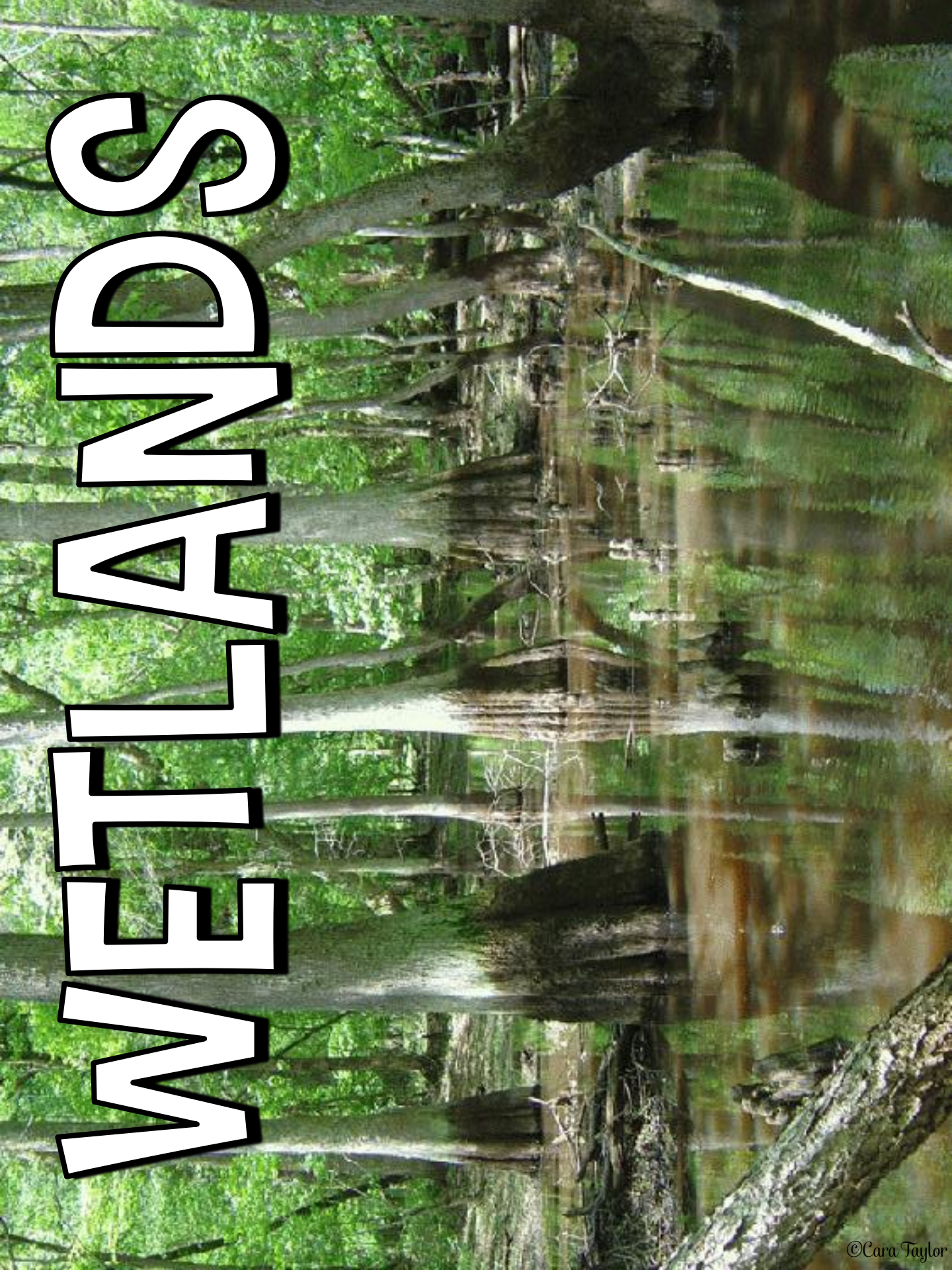
by Cara Taylor



Wetlands

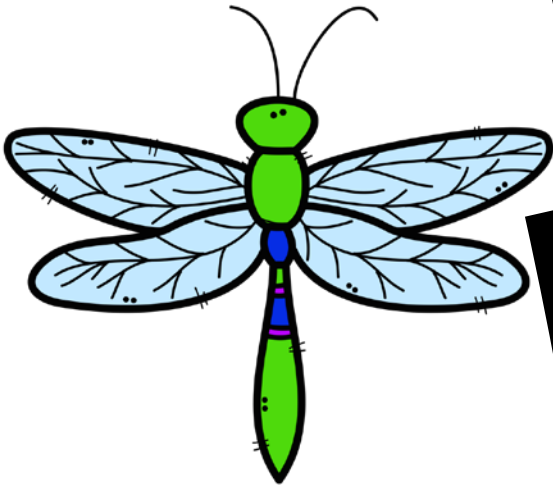
This unit begins with general activities about wetlands. Begin by making an anchor chart with the provided KWL chart pieces, with the WETLANDS poster header. You'll then find a Wetlands Fact poster to display during the unit. Following that are a set of printables to use with your students about various aspects of wetlands. These will add to your students a schema of wetlands.

WETLANDS





**WHAT WE
KNOW**



**WHAT WE
WONDER**



**WHAT WE
LEARNED**

All About **WETLANDS**



- Wetlands have water present most of the year.
- The soil is wet, black and mucky.
- Only plants that need a lot of water can survive in a wetland area.
- Many different animals live there.
- Wetlands are the connection between water and land.
- They are also called swamps, marshes, and bogs.

Name _____

ALL ABOUT WETLANDS

Directions: Fill in the map with facts you know and learn about wetlands.

NEED



HAVE

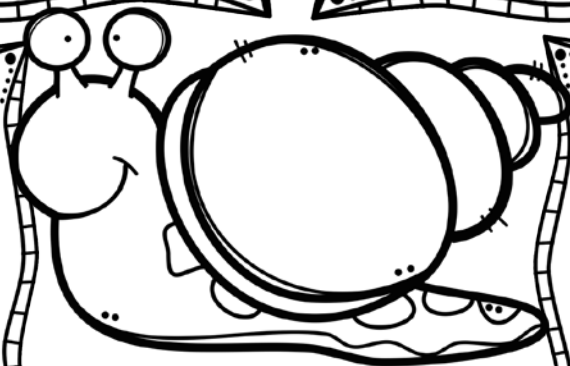
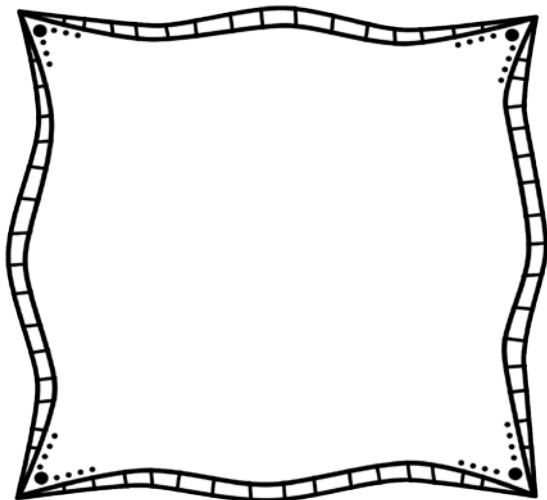
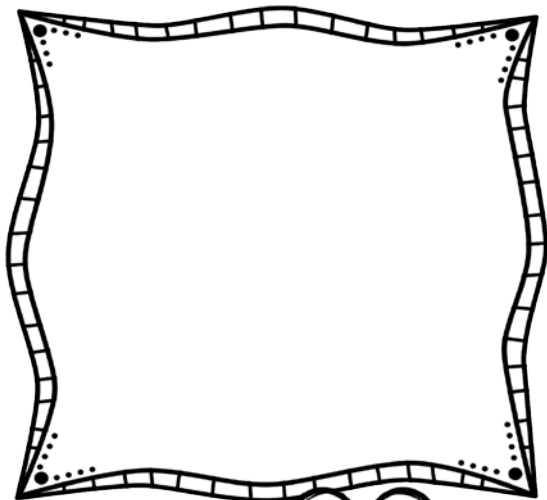


ARE

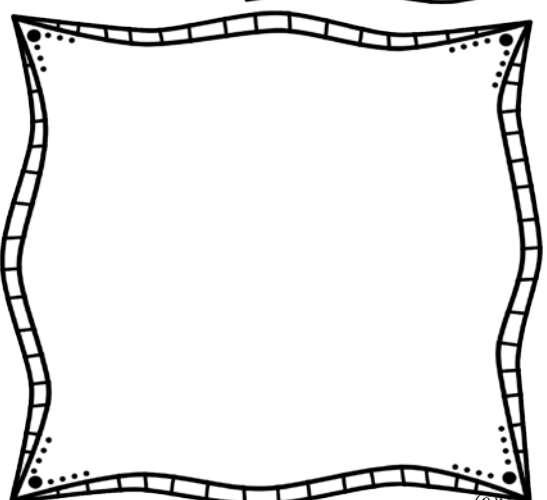
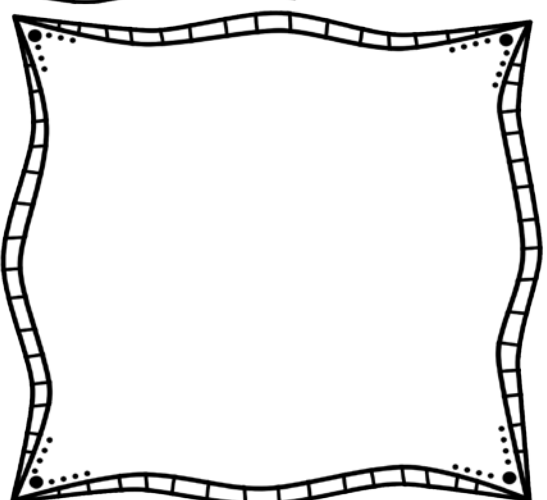


Name _____

FACTS ABOUT WETLANDS



WETLANDS



Name _____

WETLAND TRUE & FALSE

Directions: Read each statement. Color it blue if it's TRUE. Color it pink if it is FALSE.

Wetlands
have water
there.

No animals
live in
wetlands.

The dirt is
wet and
black.

Tigers
live in
wetlands.

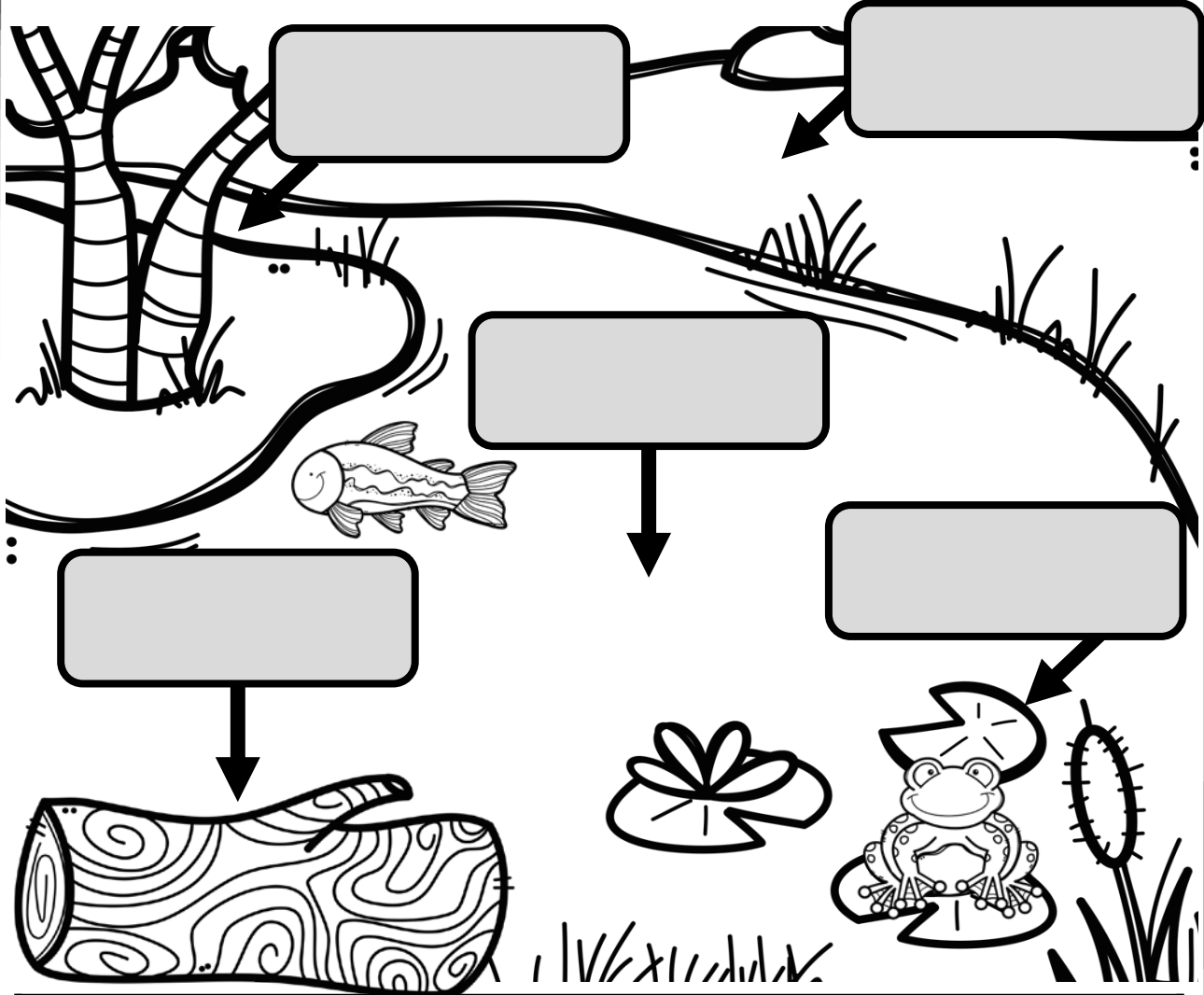
They can be
called a
swamp.

Wetlands
have
beaches.

Name _____

LABEL THE WETLAND

Directions: Use the terms at the bottom to label the wetland. Write the terms in the correct boxes.



WORD BANK

tree

water

land

log

lily pad

FUN FACT 1



FUN FACT 2



FUN FACT 3

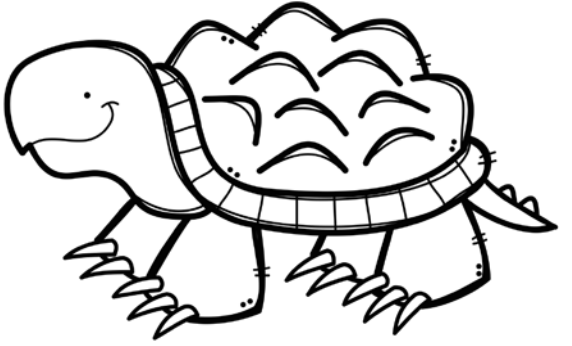


Directions: Fold on the dashed line. Cut on the horizontal, solid black lines. Write facts underneath the flaps.

FUN FACTS ABOUT WETLANDS

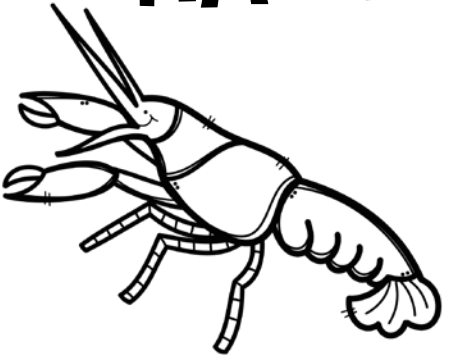
Name _____

WHAT I



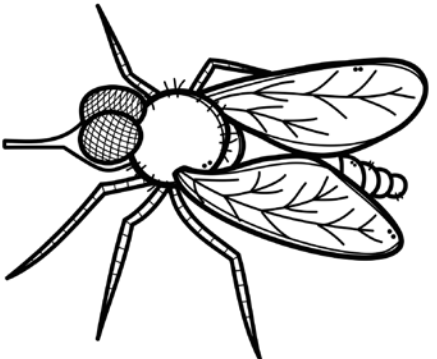
KNOW

WHAT I



WONDER

WHAT I



LEARNED

Directions: Fold on the dashed line. Cut on the horizontal, solid black lines. Write facts underneath the flaps.

KWL ABOUT WETLANDS

Name _____

Name

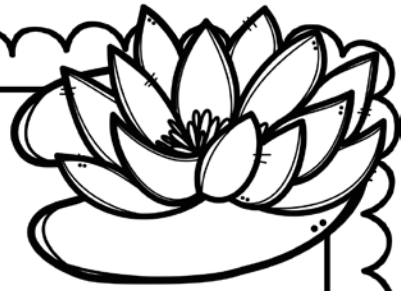
MY FAVORITE WETLAND ANIMAL

My favorite wetland animal is

Handwriting practice area with five sets of lines. Each set consists of a solid top line, a dashed middle line, and a solid bottom line.

Name _____

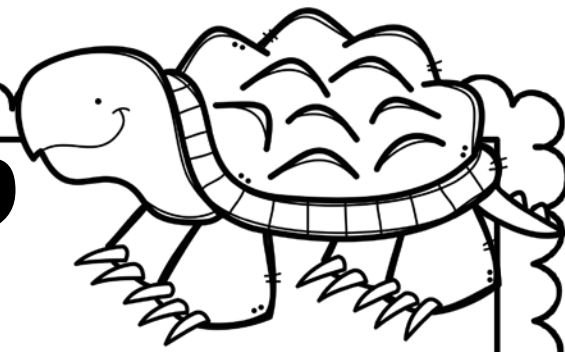
A WETLAND FACT



A fact I learned about wetlands is

Four sets of primary-ruled writing lines, each consisting of a solid top line, a dashed middle line, and a solid bottom line, provided for the student to write their fact.

Name _____



VISIT OR NOT?

I (would wouldn't) want to visit a wetland.

Four sets of primary-ruled writing lines, each consisting of a solid top line, a dashed middle line, and a solid bottom line, for student responses.

Easy Reader

To help familiarize your students with the characteristics of wetlands, you'll find an interactive reader about them. Students will read and fill in the missing letters from the word shapes. To make, copy all the pages. Stack and staple them. Finally, cut them in half horizontally to make 2 books per page stack.



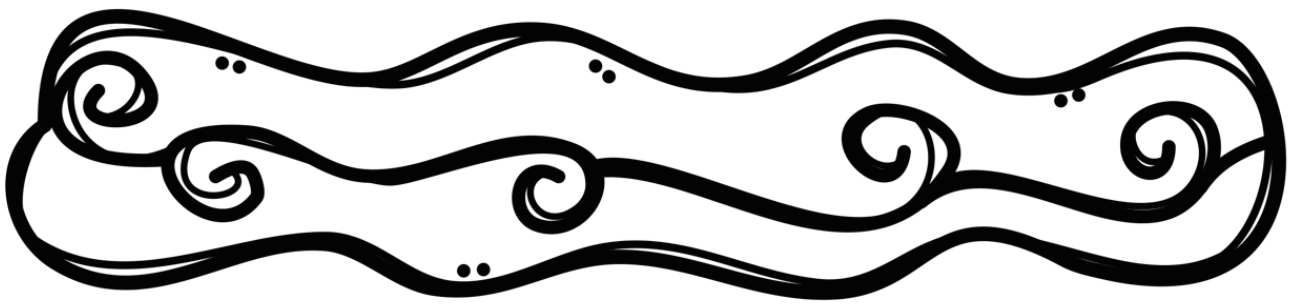
ALL ABOUT WETLANDS

Name

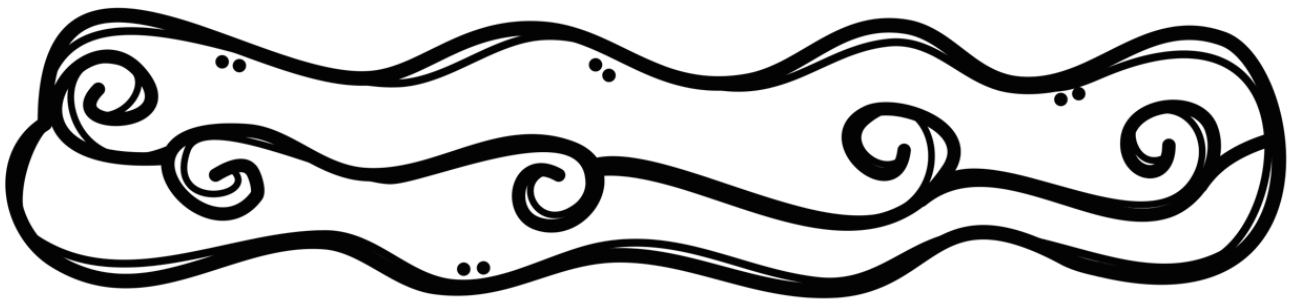
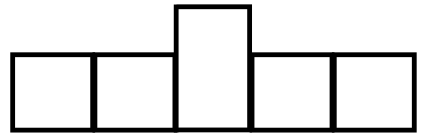


ALL ABOUT WETLANDS

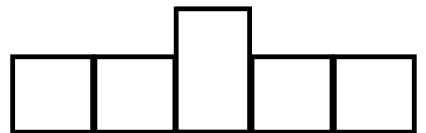
Name

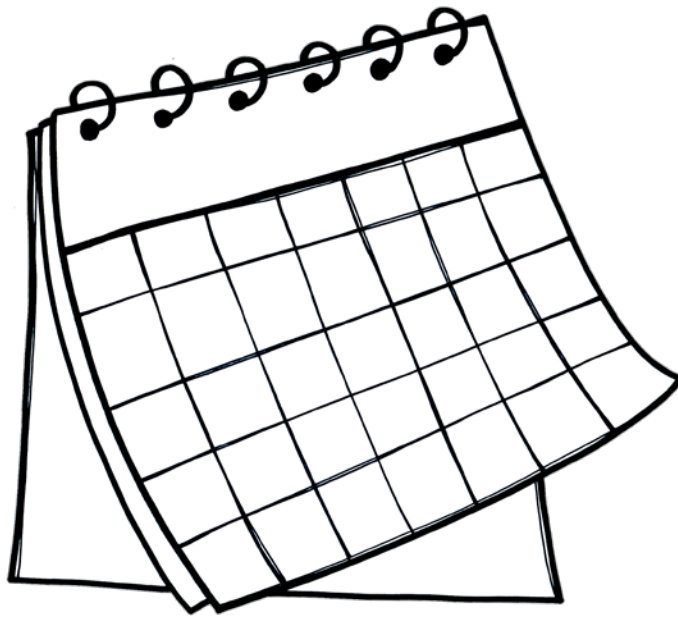


Wetlands need to have
to survive.

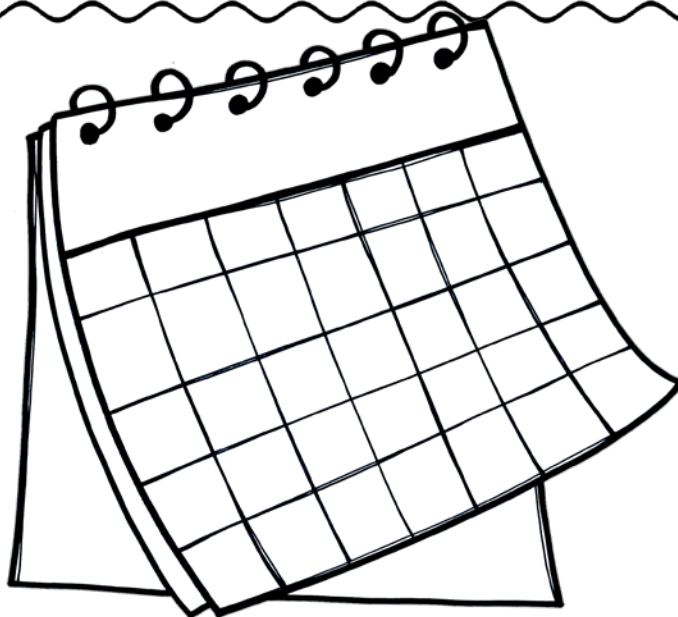


Wetlands need to have
to survive.

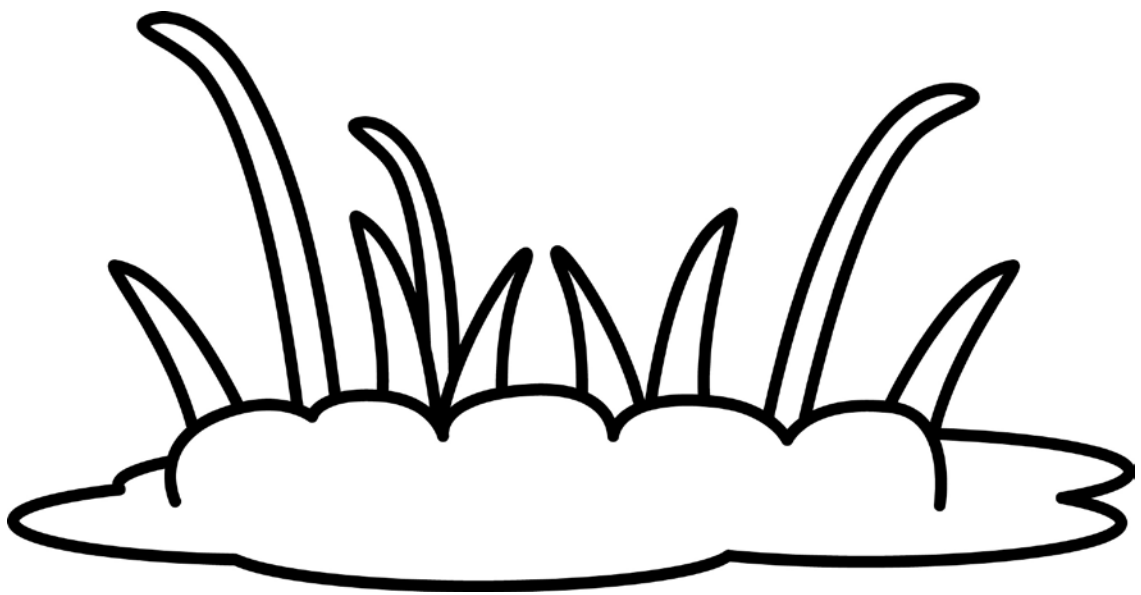




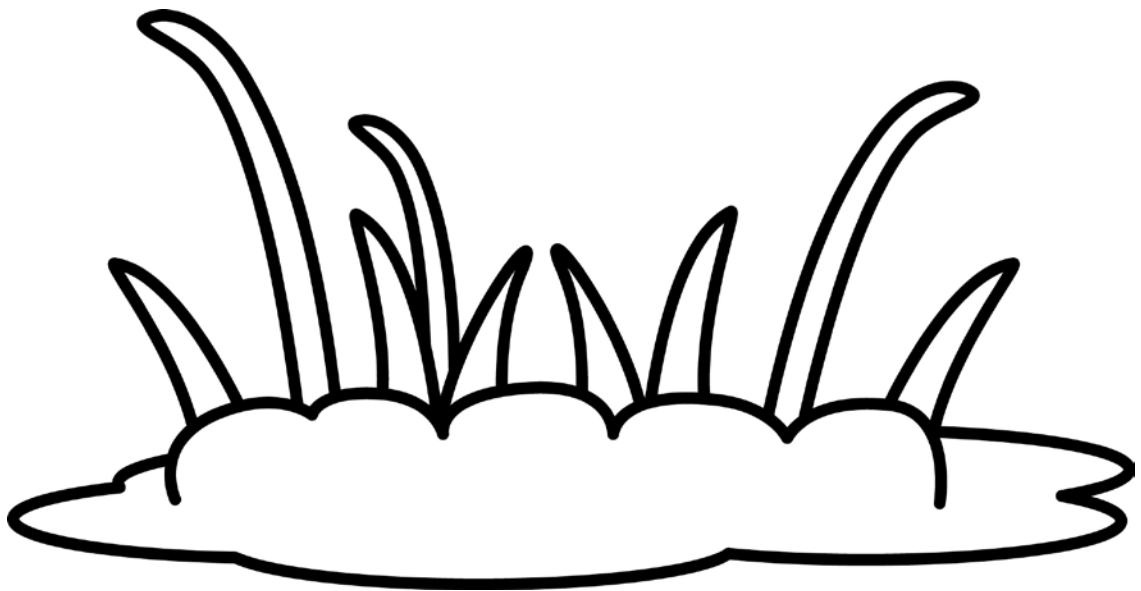
Wetlands have water present most of the .



Wetlands have water present most of the .



Wetland is very wet,
black and mucky.



Wetland is very wet,
black and mucky.

Draw your favorite wetland animal.

Draw your favorite wetland animal.

Big Book

The following is a big book all about the characteristics of wetlands. It can be projected and read with your students.

It also can be printed and bound into a book. This will make a great addition to you classroom library!

A close-up photograph of a green frog with dark spots and a prominent eye, sitting inside a large, vibrant pink lotus flower. The frog is positioned in the center of the flower, surrounded by its numerous yellow stamens. The background is a soft, out-of-focus green.

WETLAND

Life

by Cara Taylor



**Wetlands are areas
that connect land and
water.**

Of all the habitats, the most animal types live in the wetlands. This is a muskrat.

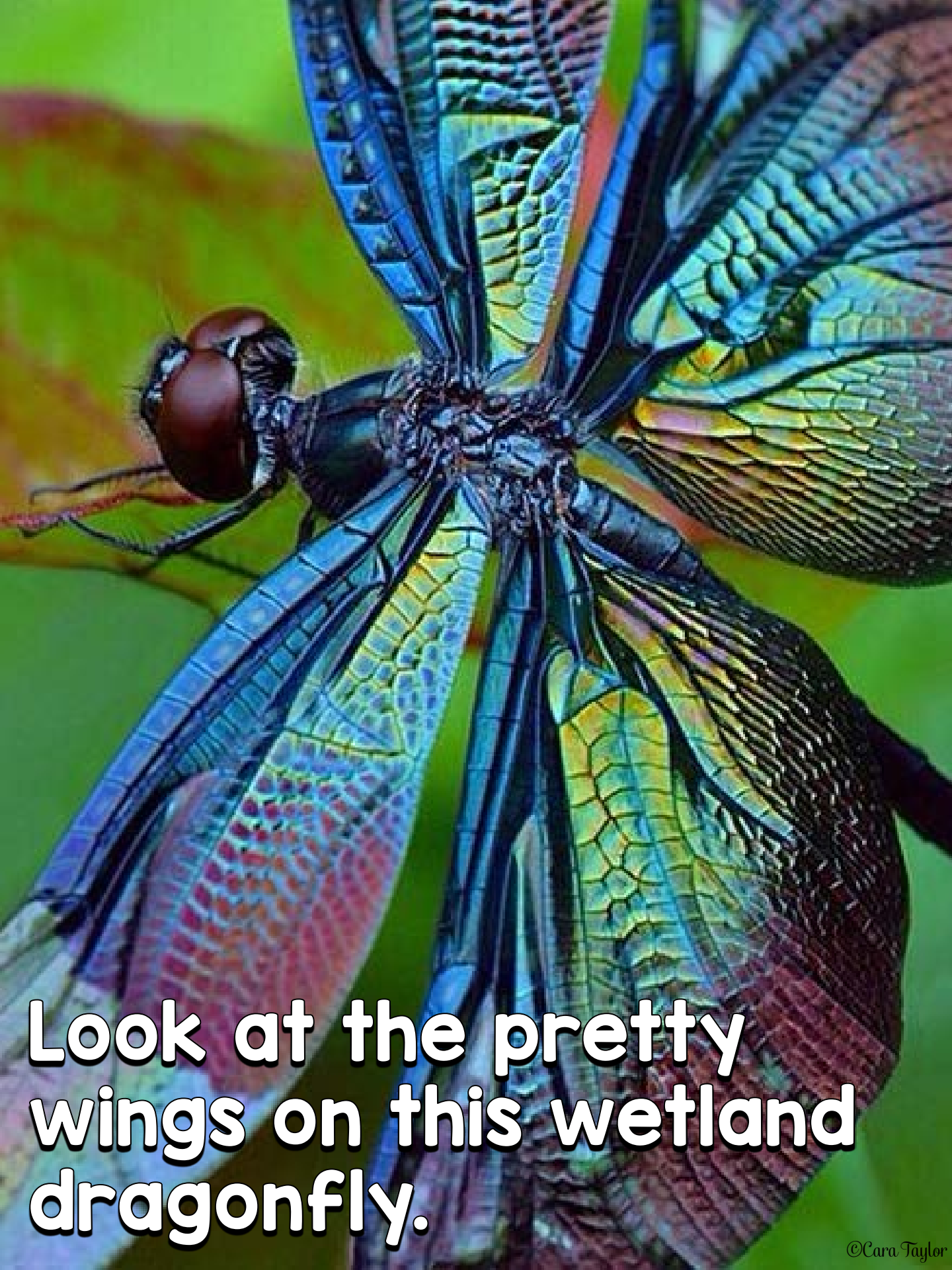




**Other mammals live
there too, like this
otter.**



**Even birds call
wetlands home. This is
a blue heron.**



Look at the pretty wings on this wetland dragonfly.

**This is a hut built by
beavers. It took more
than 6 months for
them to build!**





Wetlands have trees like a forest. But there's water there too.

Only plants that can survive in a lot of water will grow in a wetland.





Wetlands are an interesting habitat to learn about.

Posters

This section contains 10 fact posters of various types of wetland animals. These are great for teaching beginning researching skills to young learners. Each poster contains the same type of information: Habitat, Diet, Appearance, and a Fun Fact. Hang these in a prominent place in your classroom for your students' reference.



TROUT

Habitat: North America

Diet: insects, crayfish, leeches

Appearance: grayish in color, have spots, pink on sides

Fun Fact: you can tell their age by their growth rings on body



POND SNAIL

Habitat: Europe, Asia, North America

Diet: water organisms

Appearance: orange-brown shells, two antennae, eyes are head based

Fun Fact: they can slide across the water's surface



MUSKRAT

Habitat: North America, Europe, Asia

Diet: berries, fruit, leaves

Appearance: brown fur, flat faces, small noses, small bodies, long tail

Fun Fact: they make houses made out of plants



MARSH FLY

Habitat: worldwide

Diet: slugs, snails, mollusks

Appearance: iridescent wings,
large eyes on side of head

Fun Fact: eggs are laid on host
animals



BEAVER

Habitat: North America, Europe

Diet: leaves, twigs

Appearance: brown fur, short round bodies, large front teeth

Fun Fact: Native Americans would make hats from their fur



BLUE HERON

Habitat: North America

Diet: voles, fish

Appearance: gray feathers, black and blue markings, long legs & neck

Fun Fact: they live in colonies, or groups



SNAPPING TURTLE

Habitat: North America

Diet: turtles, insects, fish

Appearance: hard outer shell on back, sharp teeth, short head

Fun Fact: they communicate by moving their front legs



OTTER

Habitat: everywhere except Antarctica and Australia

Diet: crabs, crayfish, frogs

Appearance: slender long bodies, whiskers, small round ears

Fun Fact: a group of otters is called a “romp”



CRAYFISH

Habitat: worldwide

Diet: fish, shrimp, water plants

Appearance: red or orange, hard outer shells, pinchers, long tail

Fun Fact: they are nocturnal, or active at night



DRAGONFLY

Habitat: everywhere except Antarctica

Diet: insects

Appearance: iridescent wings, large compound eyes, long body

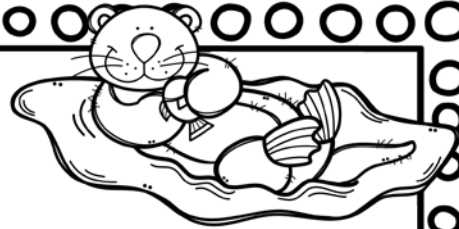
Fun Fact: most of their life is spent underwater as a nymph

Printables

After introducing each animal poster, have students complete the following printables. There is a fact sheet and writing printable for each animal provided. Students can choose to do one or two animals for a “research” project.

Name _____

ALL ABOUT OTTERS



Directions: Fill in the map with facts you know and learn about this wetland animal.

CAN

HAVE

ARE

Name _____



OTTER

I learned that this wetland animal

Four sets of primary writing lines, each consisting of a solid top line, a dashed middle line, and a solid bottom line, for writing a response.

Name _____



ALL ABOUT SNAPPING TURTLES

Directions: Fill in the map with facts you know and learn about this wetland animal.

CAN

HAVE

ARE

Name _____

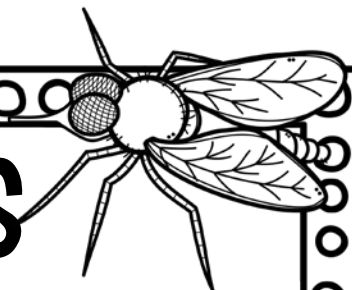


SNAPPING TURTLE

I learned that this wetland animal

Four sets of primary writing lines, each consisting of a solid top line, a dashed middle line, and a solid bottom line.

Name _____



ALL ABOUT MARSH FLIES

Directions: Fill in the map with facts you know and learn about this wetland animal.

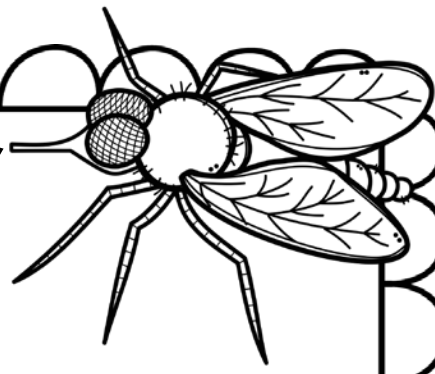
CAN

HAVE

ARE

Name _____

MARSH FLY



I learned that this wetland animal

Four sets of primary writing lines, each consisting of a solid top line, a dashed middle line, and a solid bottom line, for student response.

Name _____



ALL ABOUT DRAGONFLIES

Directions: Fill in the map with facts you know and learn about this wetland animal.

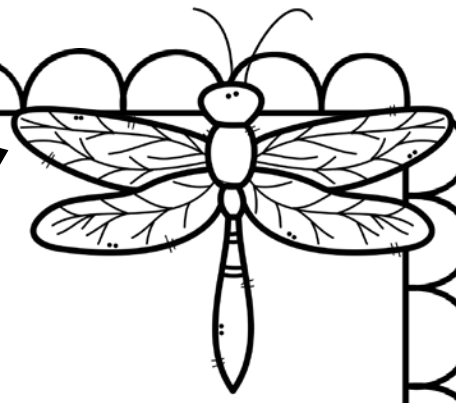
CAN

HAVE

ARE

Name _____

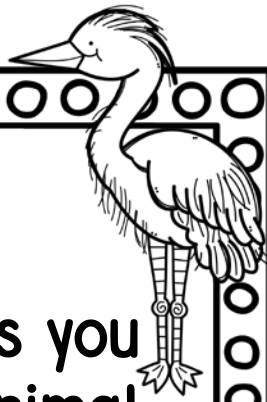
DRAGONFLY



I learned that this wetland animal

Four sets of primary writing lines, each consisting of a solid top line, a dashed middle line, and a solid bottom line, for student response.

Name _____



ALL ABOUT BLUE HERONS

Directions: Fill in the map with facts you know and learn about this wetland animal.

CAN

HAVE

ARE

Name _____

BLUE HERON



I learned that this wetland animal

Four sets of primary writing lines, each consisting of a solid top line, a dashed middle line, and a solid bottom line, for writing a response.

Name _____



ALL ABOUT BEAVERS

Directions: Fill in the map with facts you know and learn about this wetland animal.

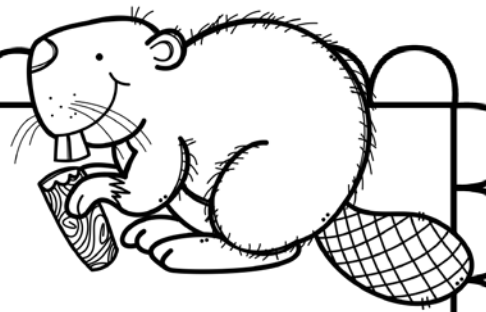
CAN

HAVE

ARE

Name _____

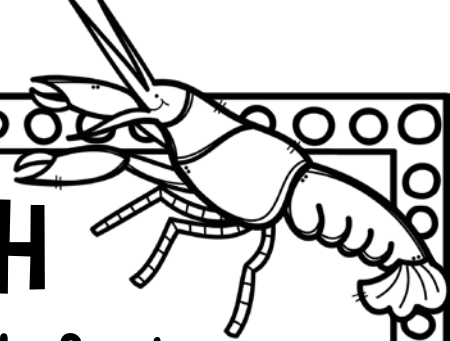
BEAVER



I learned that this wetland animal

Four sets of primary writing lines, each consisting of a solid top line, a dashed middle line, and a solid bottom line, for writing a response.

Name _____



ALL ABOUT CRAYFISH

Directions: Fill in the map with facts you know and learn about this wetland animal.

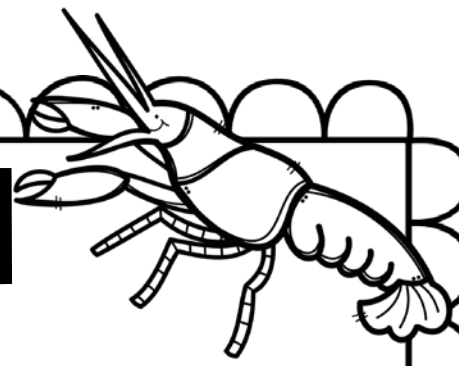
CAN

HAVE

ARE

Name _____

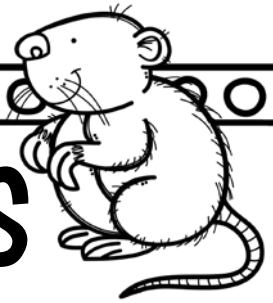
CRAYFISH



I learned that this wetland animal

Four sets of primary writing lines, each consisting of a solid top line, a dashed middle line, and a solid bottom line, for writing a response.

Name _____



ALL ABOUT MUSKRATS

Directions: Fill in the map with facts you know and learn about this wetland animal.

CAN

HAVE

ARE

Name _____

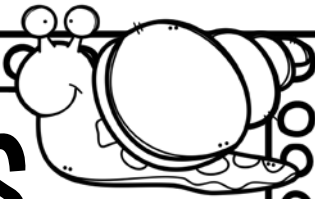
MUSKRAT



I learned that this wetland animal

Four sets of primary-ruled writing lines, each consisting of a solid top line, a dashed middle line, and a solid bottom line, for writing a response to the prompt above.

Name _____



ALL ABOUT POND SNAILS

Directions: Fill in the map with facts you know and learn about this wetland animal.

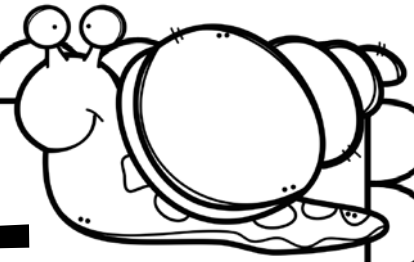
CAN

HAVE

ARE

Name _____

POND SNAIL

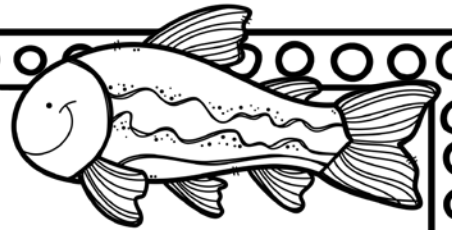


I learned that this wetland animal

Four sets of primary writing lines, each consisting of a solid top line, a dashed middle line, and a solid bottom line, for writing a response.

Name _____

ALL ABOUT TROUT



Directions: Fill in the map with facts you know and learn about this wetland animal.

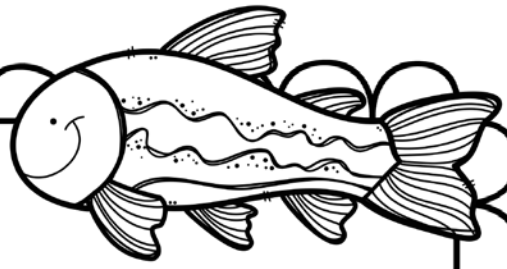
CAN

HAVE

ARE

Name _____

TROUT



I learned that this wetland animal

Four sets of primary writing lines, each consisting of a solid top line, a dashed middle line, and a solid bottom line.

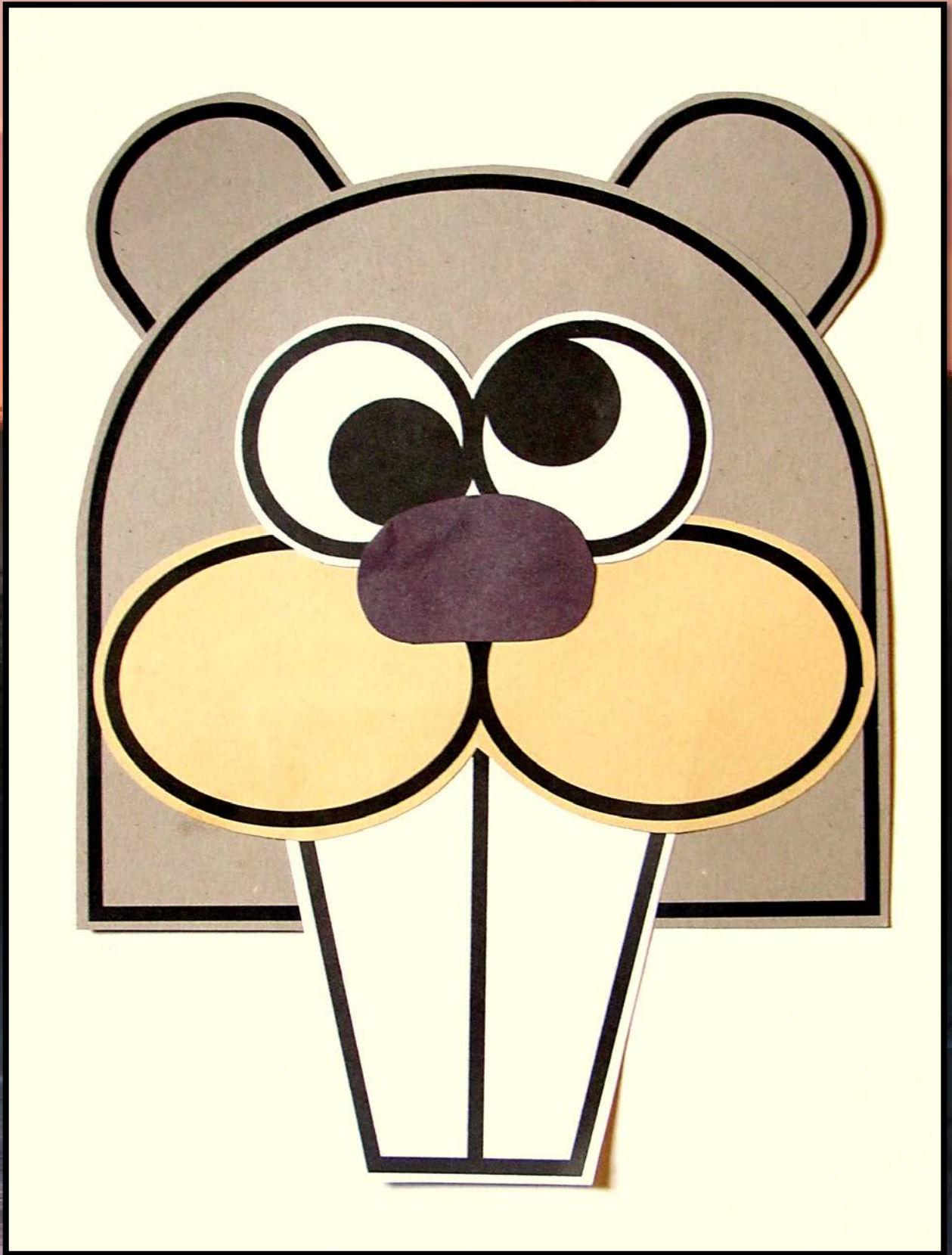
Craftivity

To make this craft, copy and cut out all the templates.

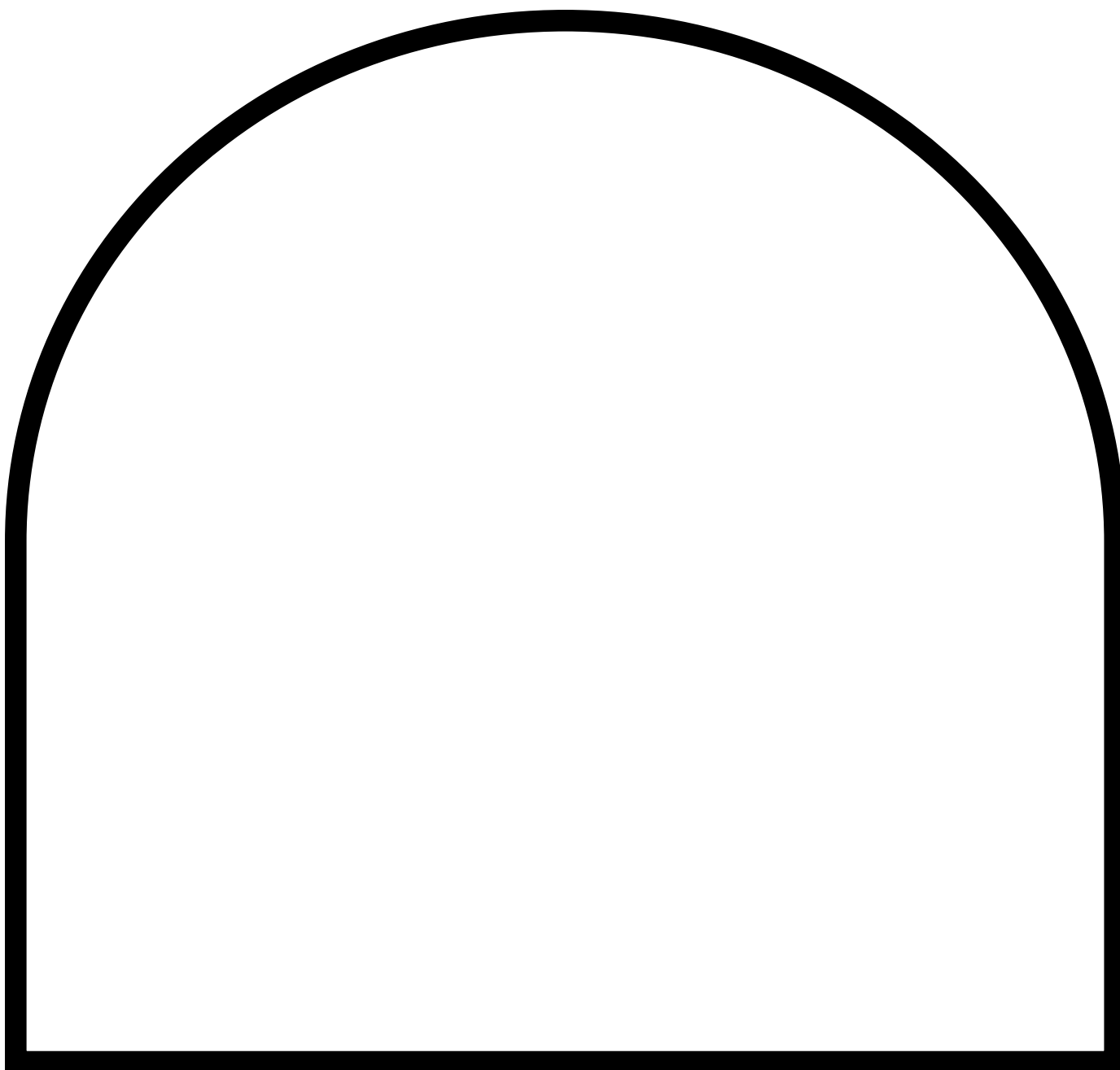
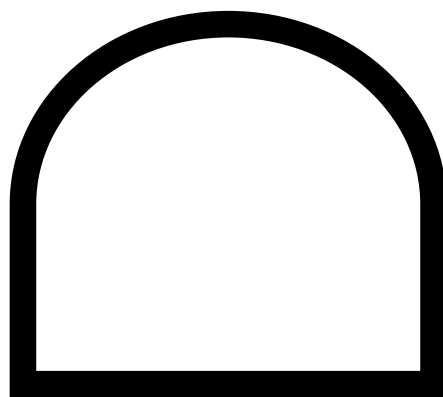
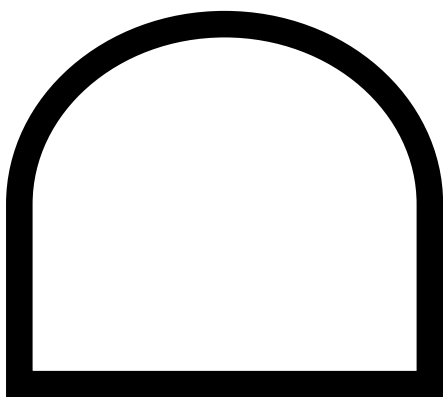
Glue the ears to the head. Glue the ears, cheeks, nose, and eyes together.

Then glue that entire piece to the head. Attach to the writing printable if you wish!

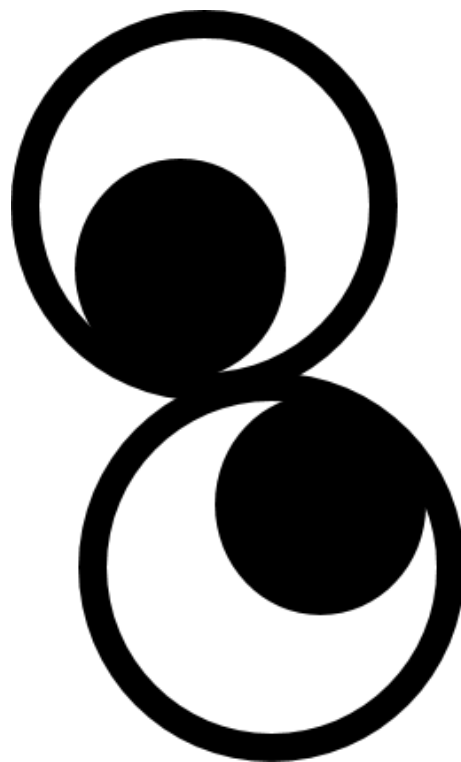
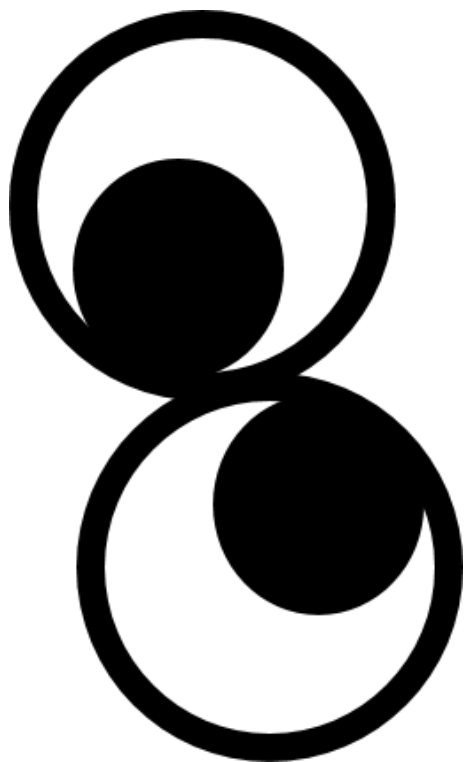
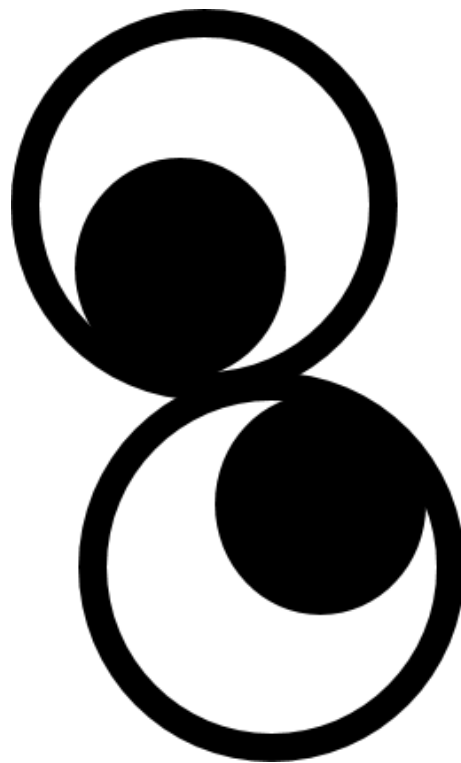
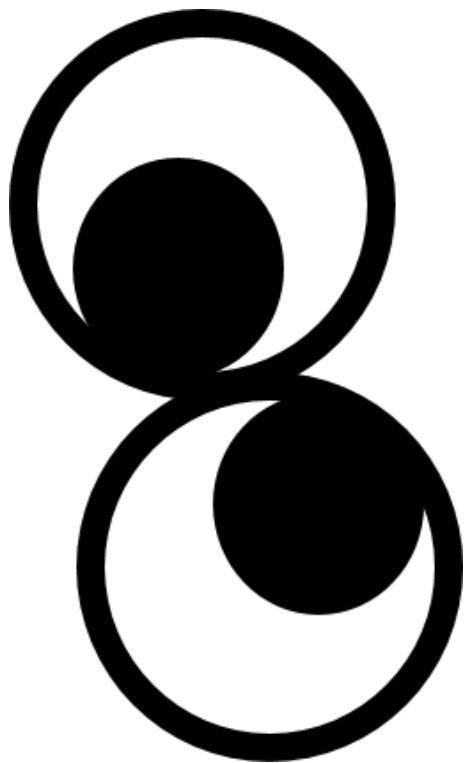




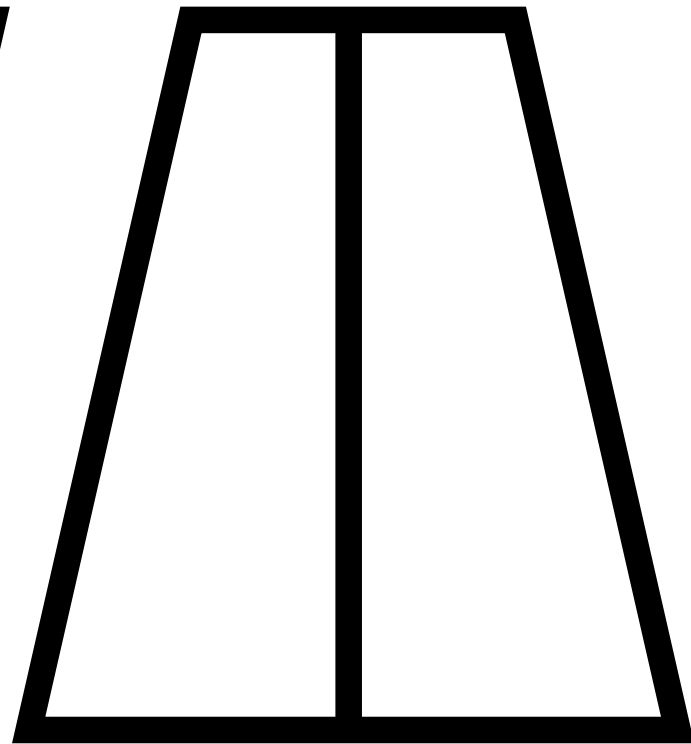
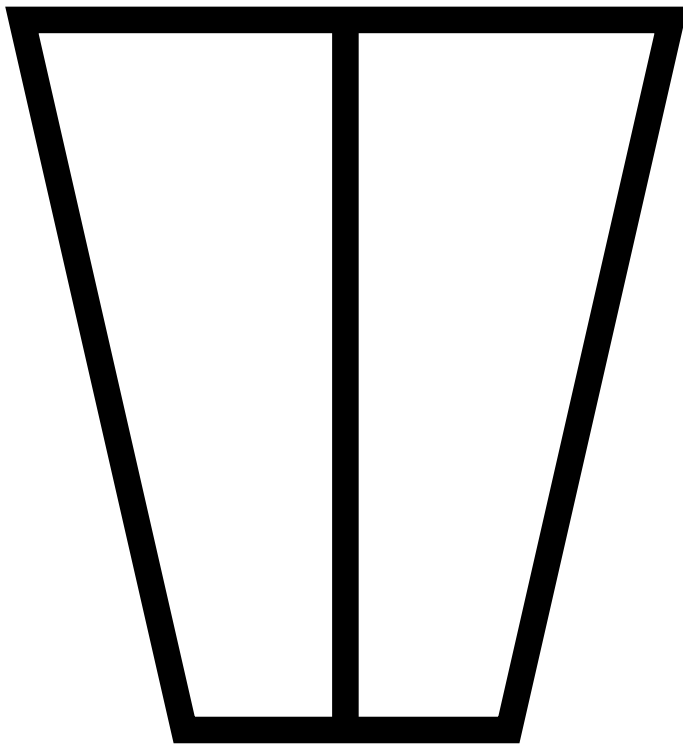
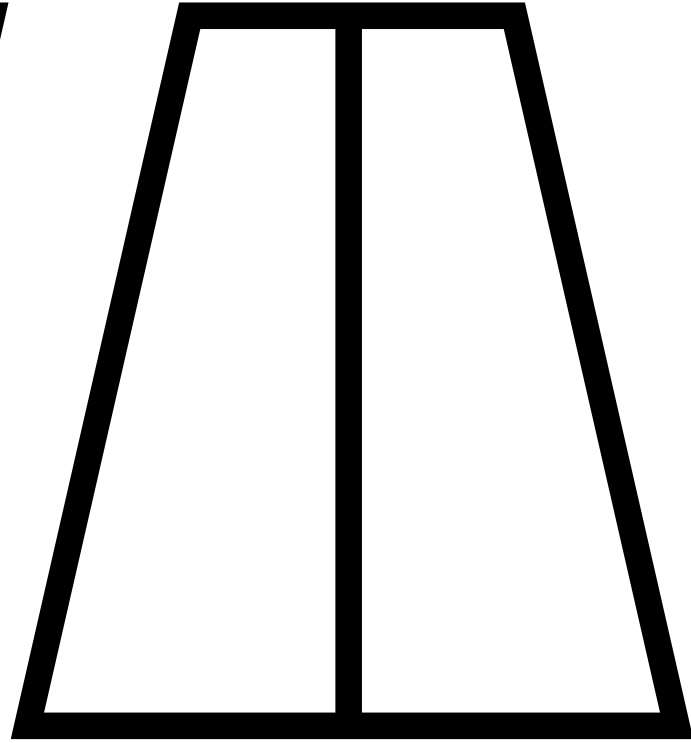
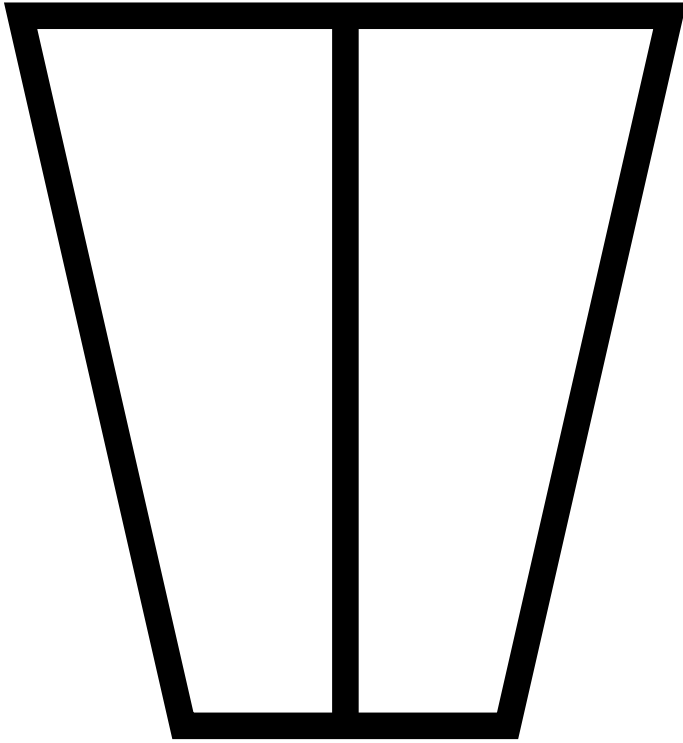
Head & Ears, 1 set per student - brown



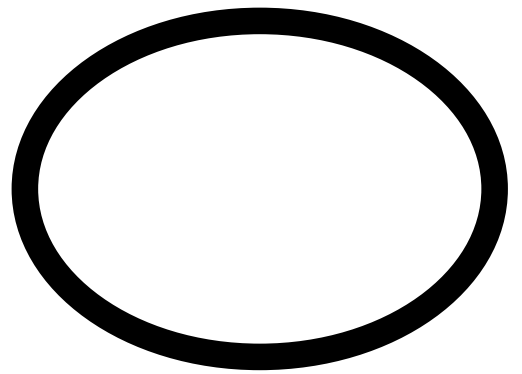
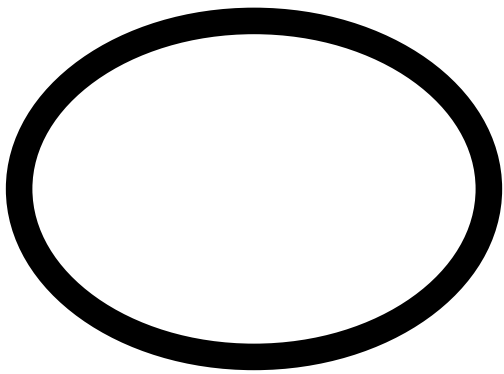
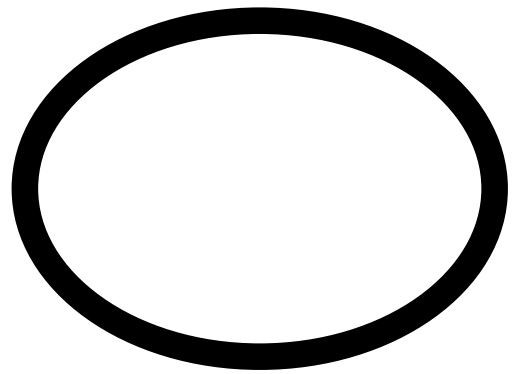
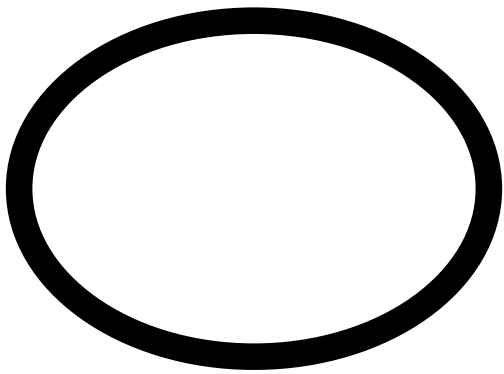
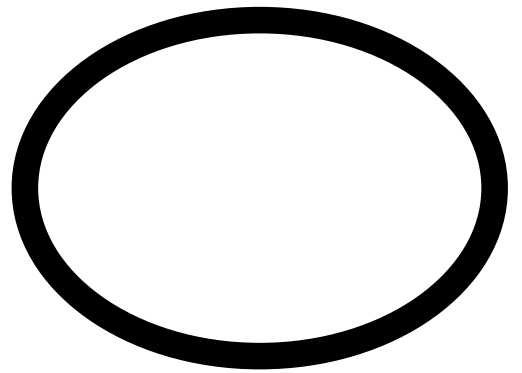
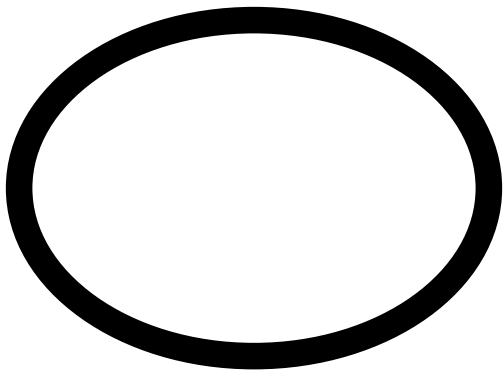
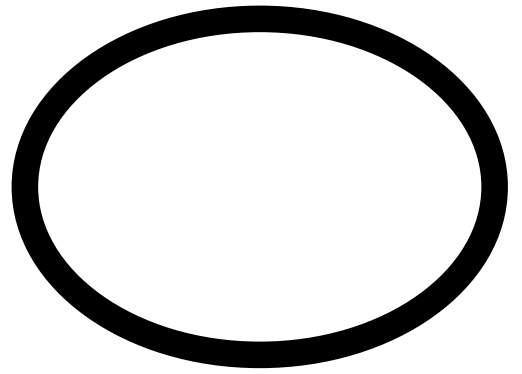
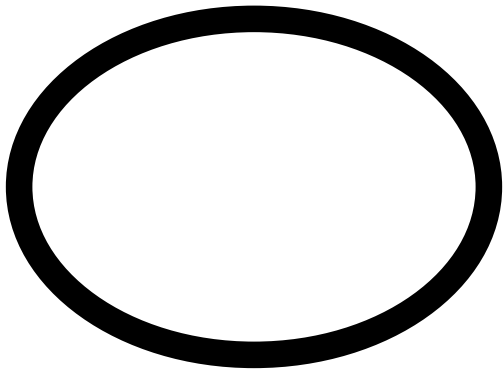
Eyes, 1 set per student - white



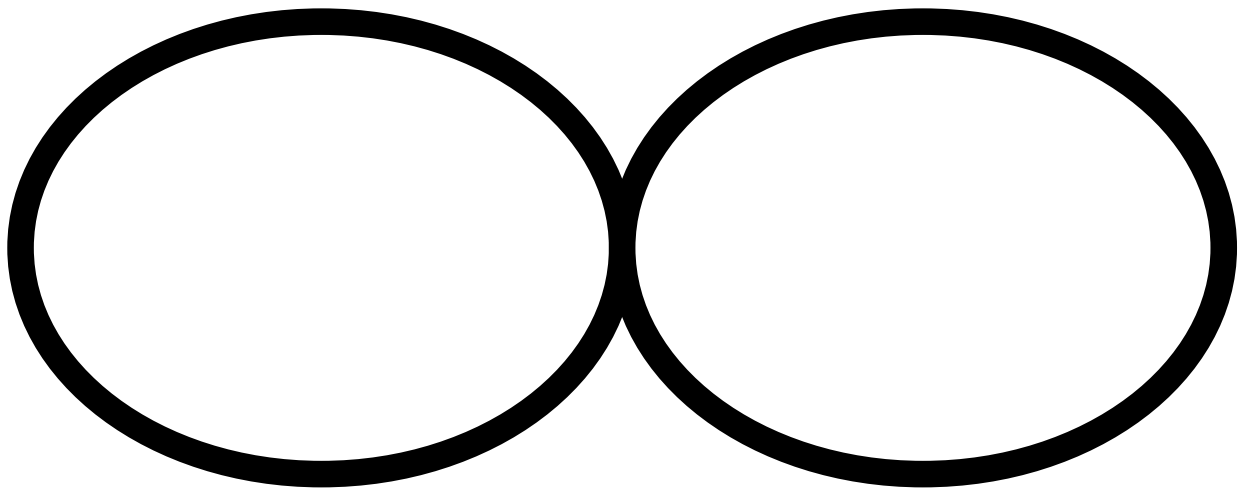
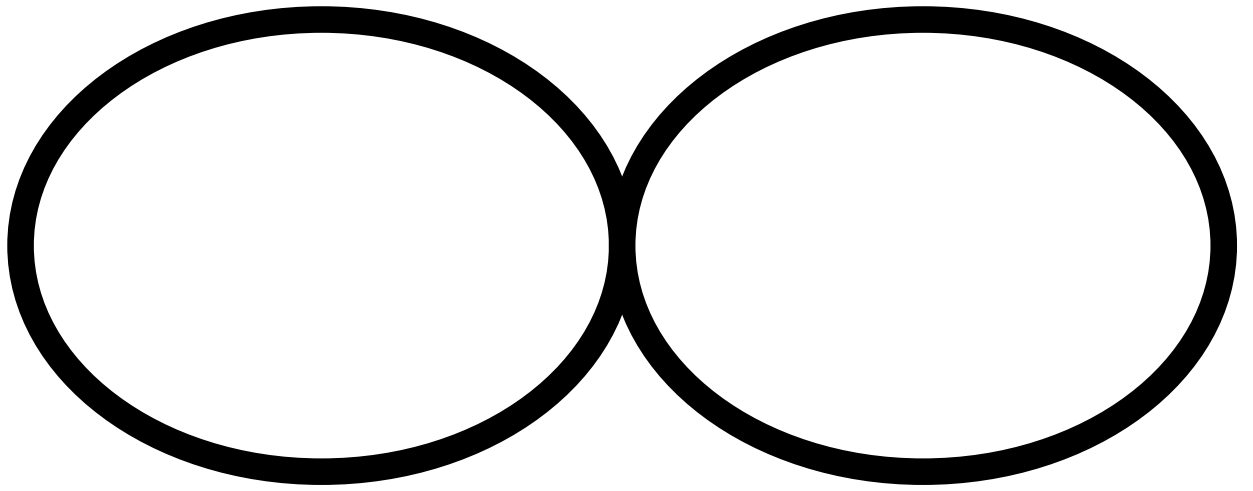
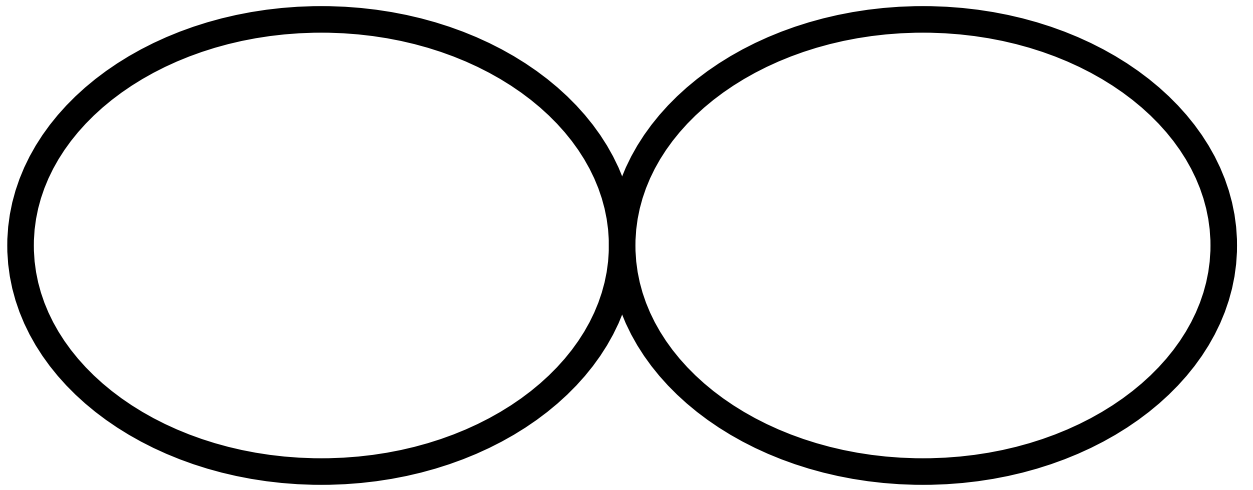
Teeth, 1 set per student - white



Nose, I per student - black



Cheeks, 1 set per student - tan



Name _____

ALL ABOUT BEAVERS

An interesting fact about beavers is



THANKS SO MUCH!

If it weren't for the AWESOME graphic artists below, our products would look pretty boring! Agree? If so, show these artists some love by supporting their TpT Stores. I appreciate them allowing me to share their talents in my products! Happy Teaching,

Cara Taylor ☺

