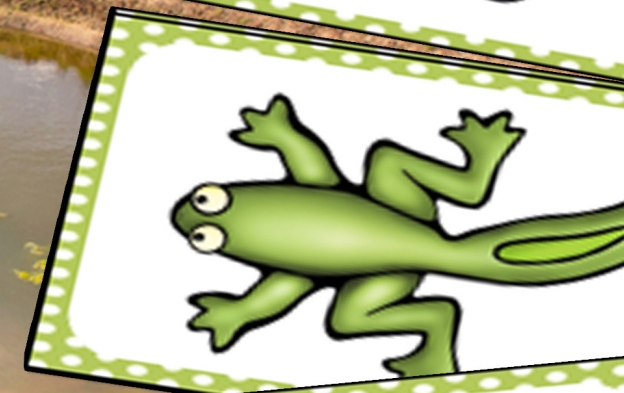


Frog Pond Life-Cycle Game



Frog Pond

A Life Cycle Game



This product is for single classroom use only, by one teacher. If you intend to use this product for more than one classroom/teacher, please return to Life Over C's and purchase additional licenses.

You may not share this resource, sell this resource, copy this resource for distribution other than classroom use.

All rights for this product remain with Life Over C's

Copyright© Life Over C's 2014

I am striving for all A+ ratings. If there is a problem with this product that makes it less than A+ please let me know and I will do my best to remedy that.

Frog Pond

There are two options for this game. A file folder game and a life-size game.

For the file folder game:

Print pages 3-5. You may want to print two copies of page 5 or simply have the students reshuffle the cards when they reach the bottom of the draw pile.

Assemble the frog markers on page 3.

For the life-size game:

Print pages 6-15 multiple times to create the size of "board" that you want depending on the size of your playing area. Put the pictures in page protectors and attach them to the floor with tape.

Print page 5 to use as the playing cards.

The students will be the "markers".

Frog Pond

For 2-6 Players

Instructions:

Place your marker on the "Start" eggs. Place cards upside down on the "Card Draw Pile".

Choose a player to go first.

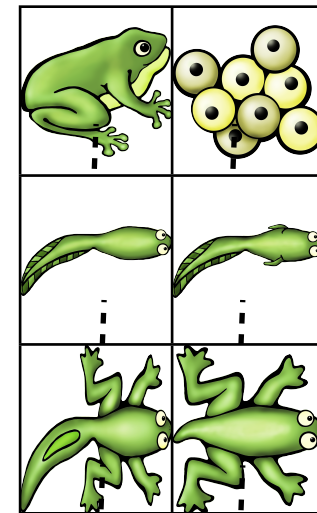
The player will draw the top card from the pile and move the first space with the matching picture. Play continues to the next player.

If a fly, pond, reeds or lily pad card is drawn the player will head to the space with that picture, even if it is behind him.

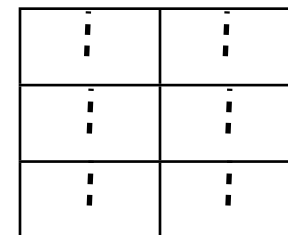
To win by landing on the last frog, a player MUST draw a frog card from the pile.



File Folder Label

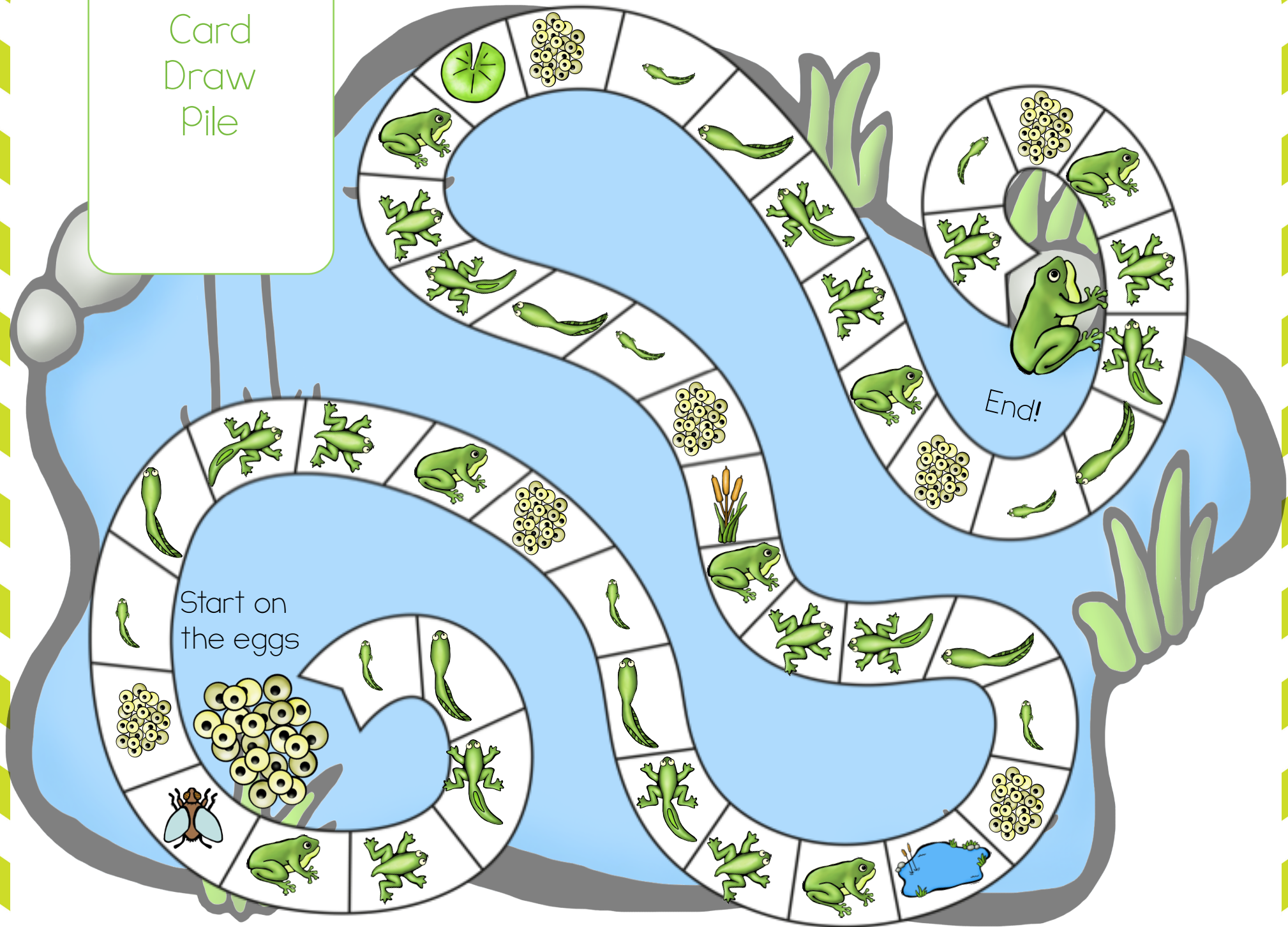


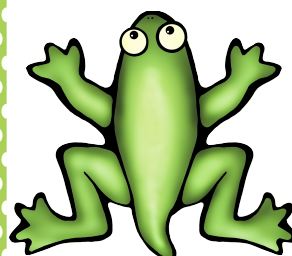
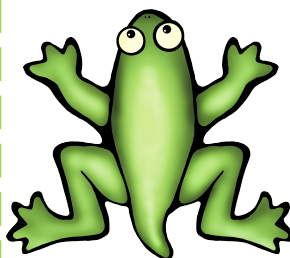
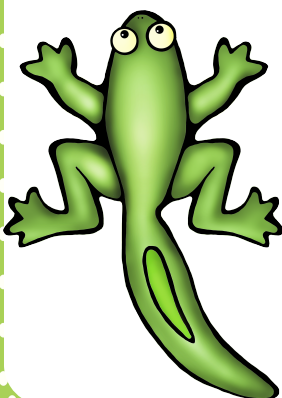
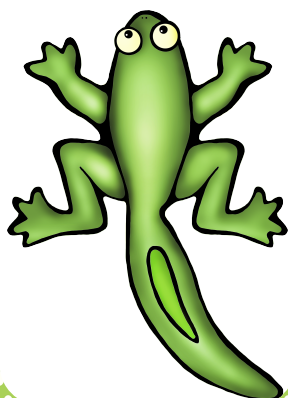
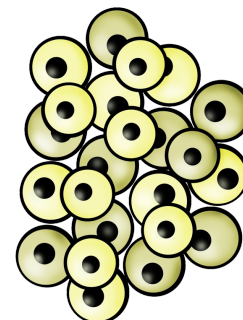
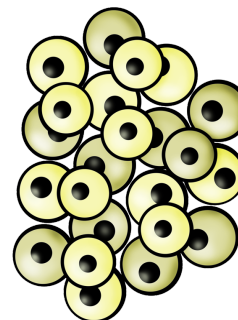
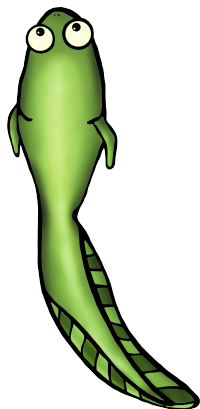
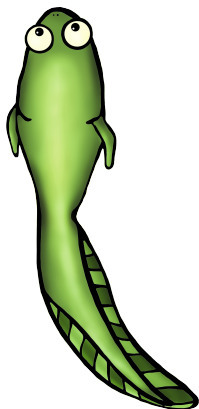
Game Markers



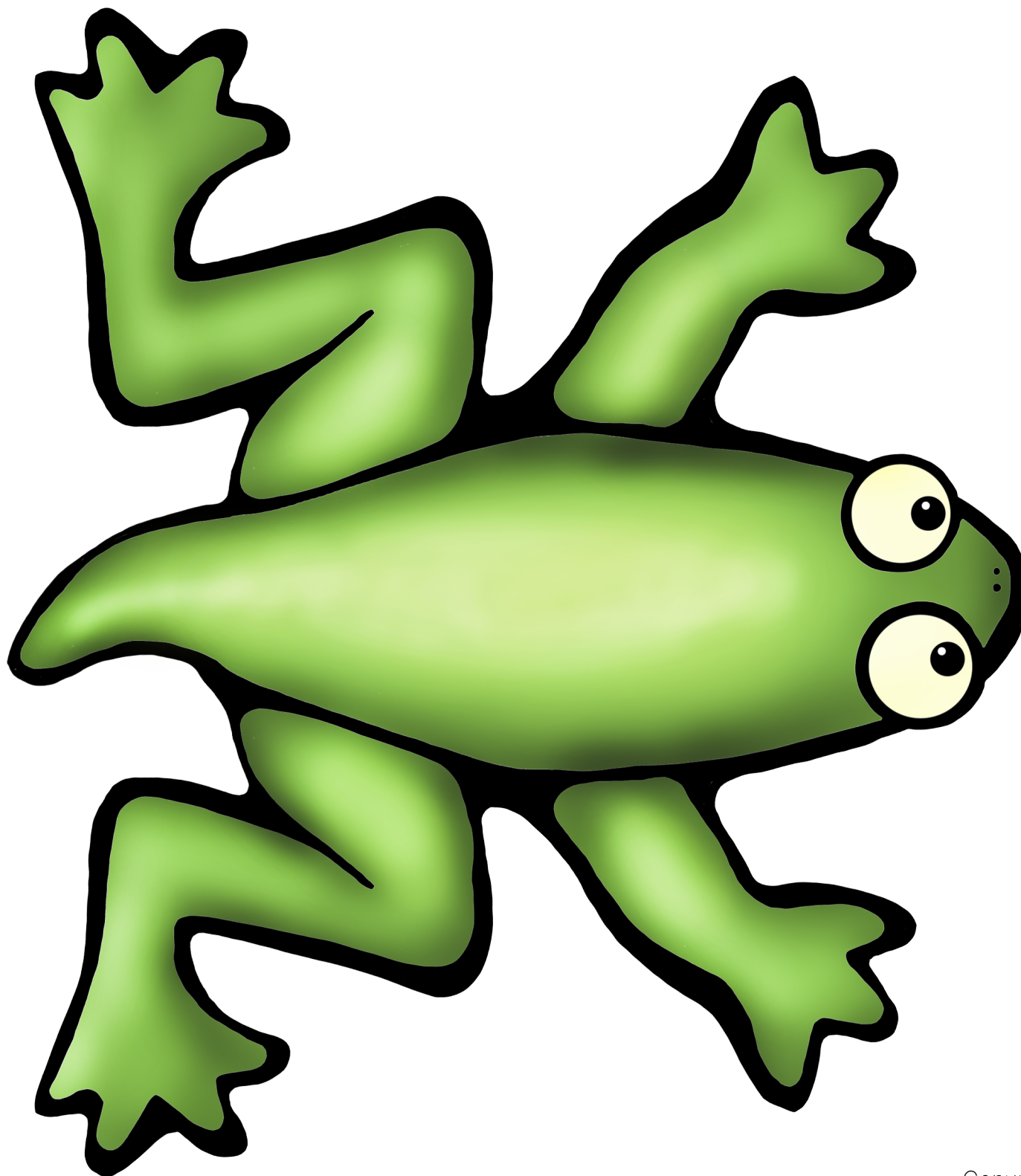
Cut on solid lines. Then, cut on the dotted line, being careful not to cut all the way through the piece. Slide the small piece onto the marker to help the marker stand up.

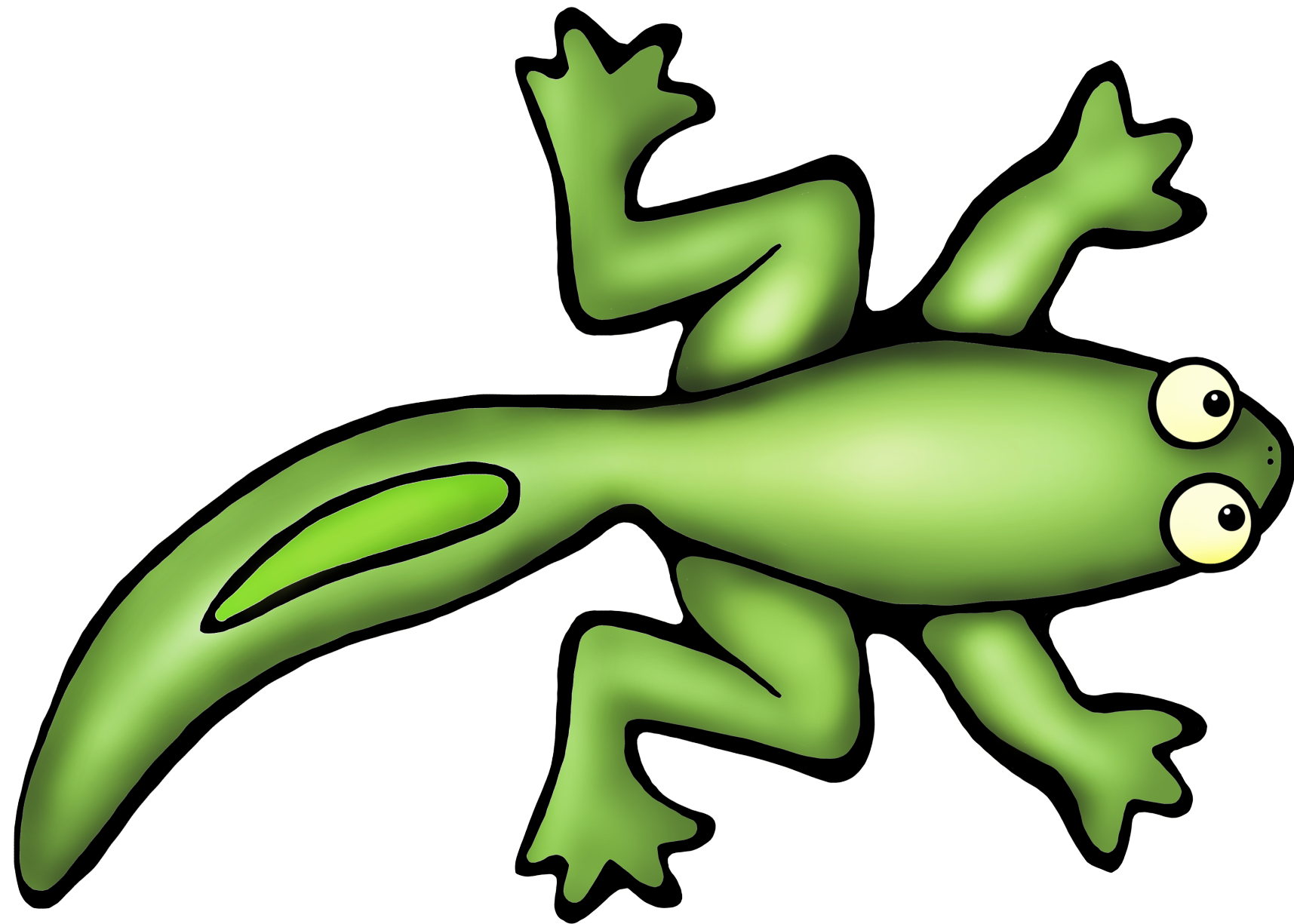
Card
Draw
Pile

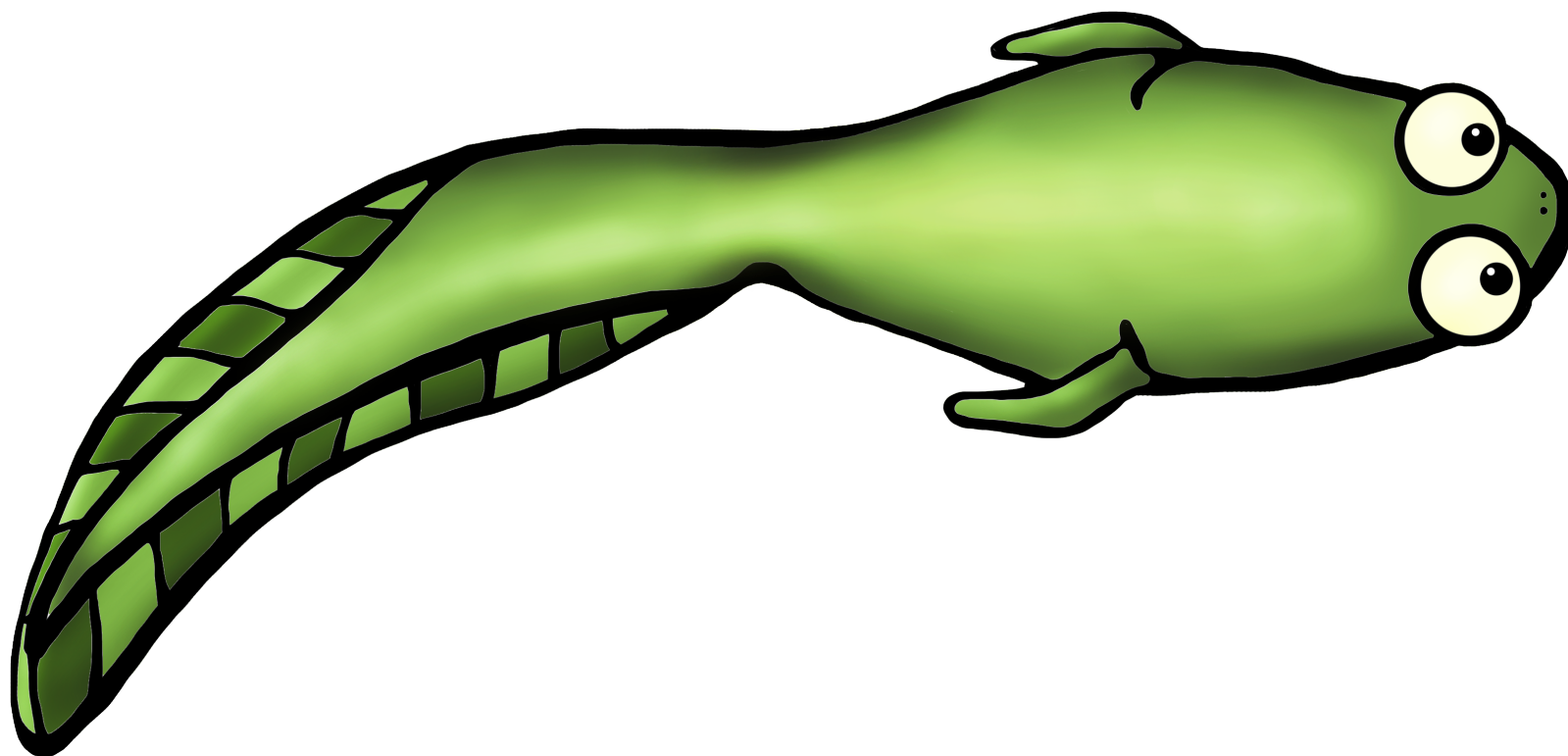


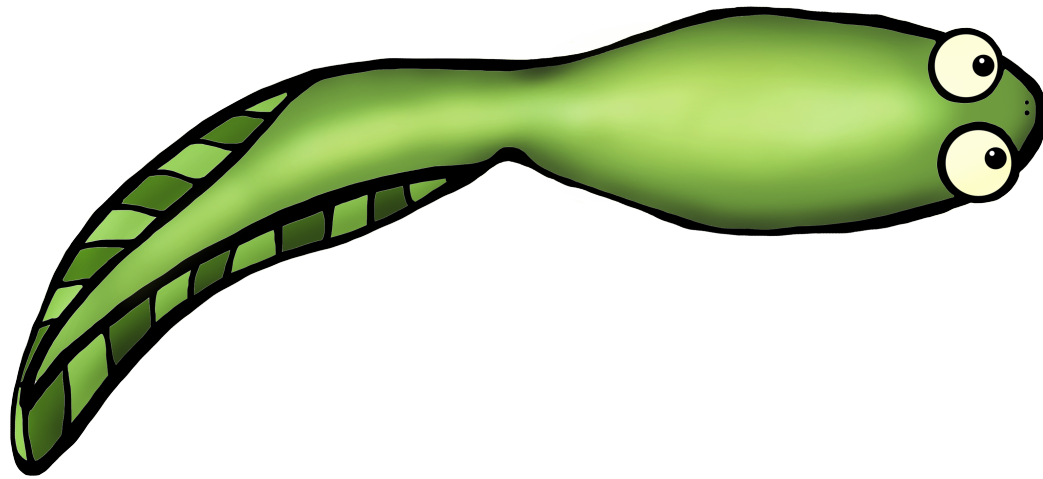


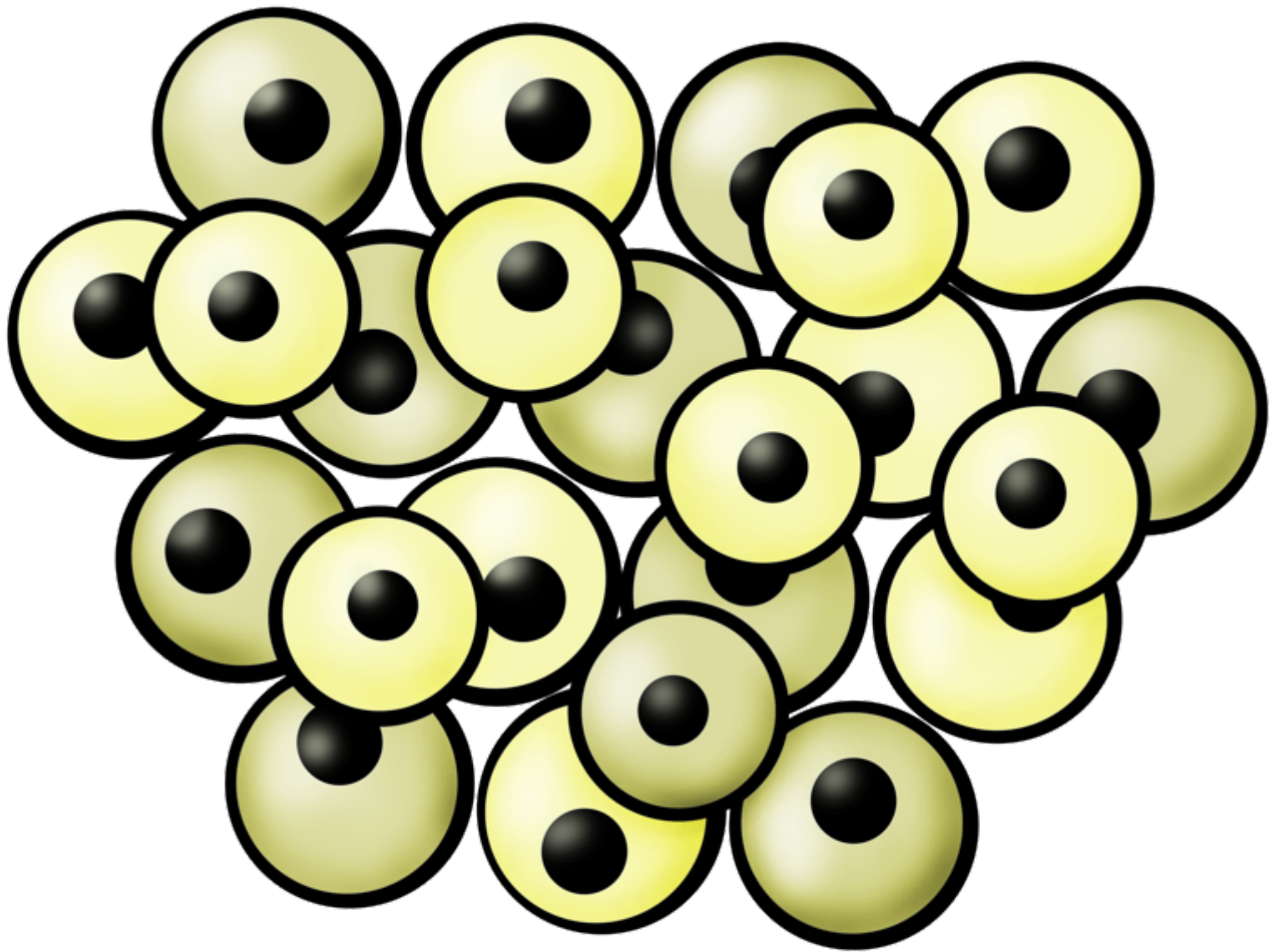


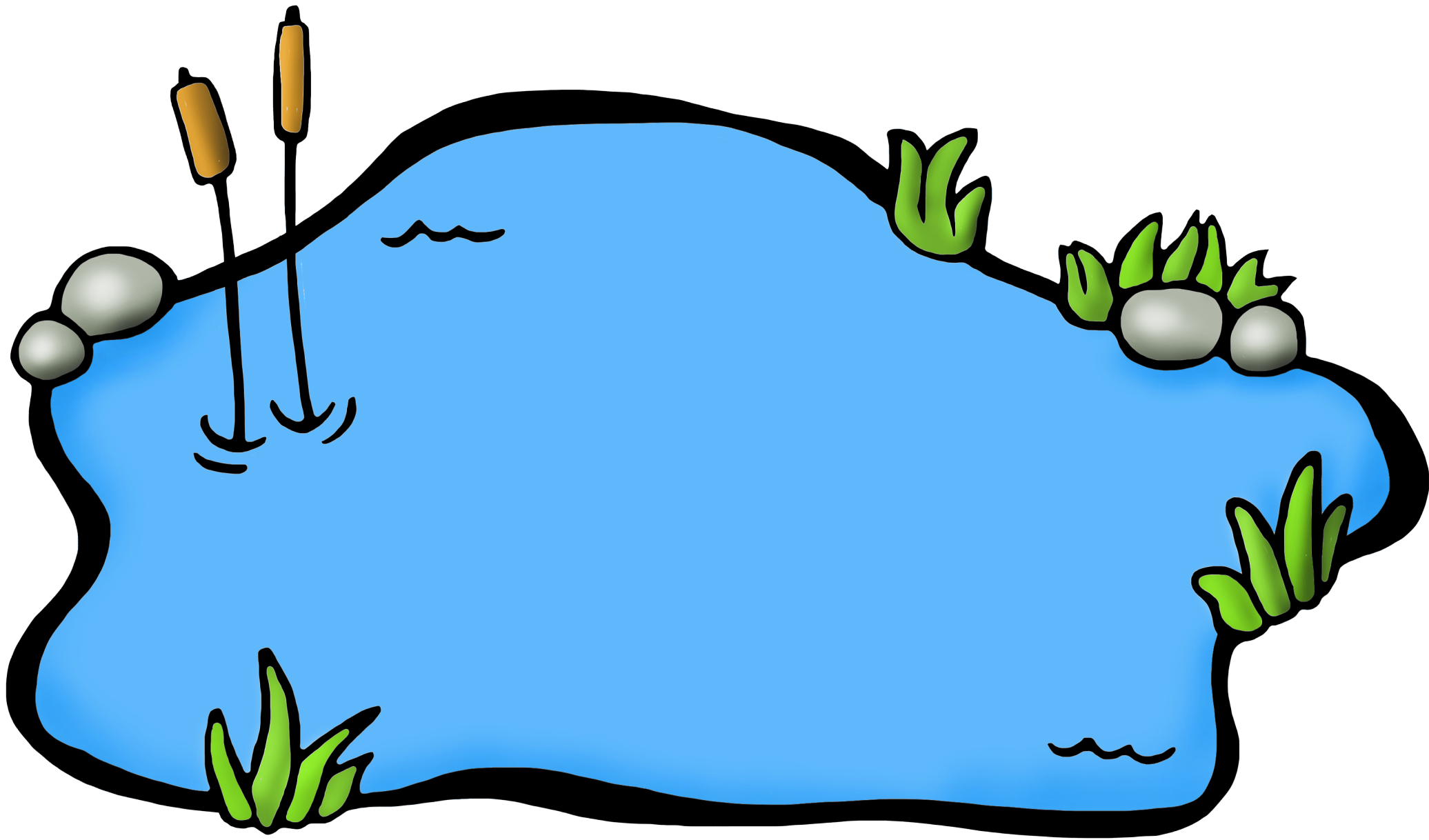


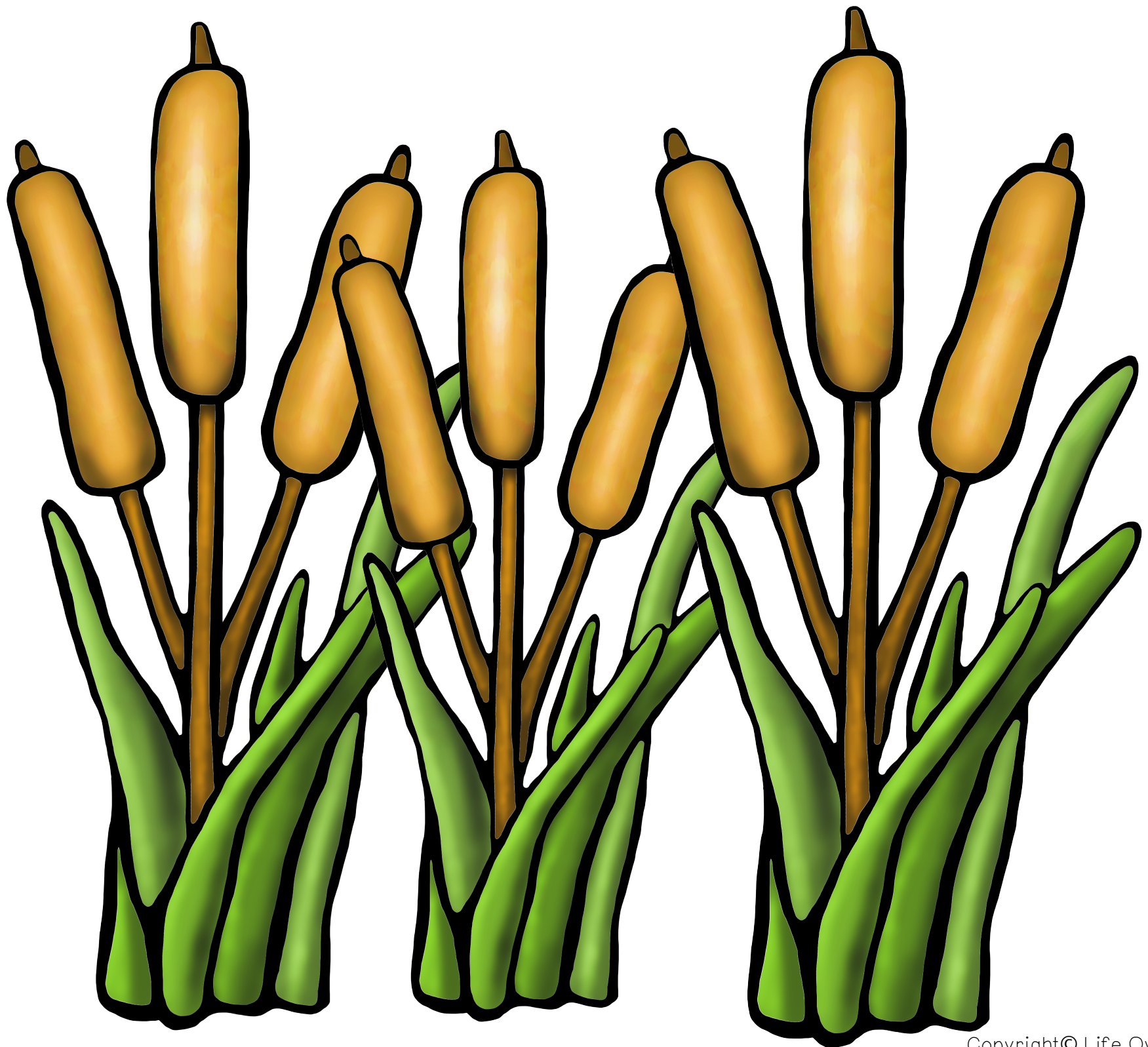


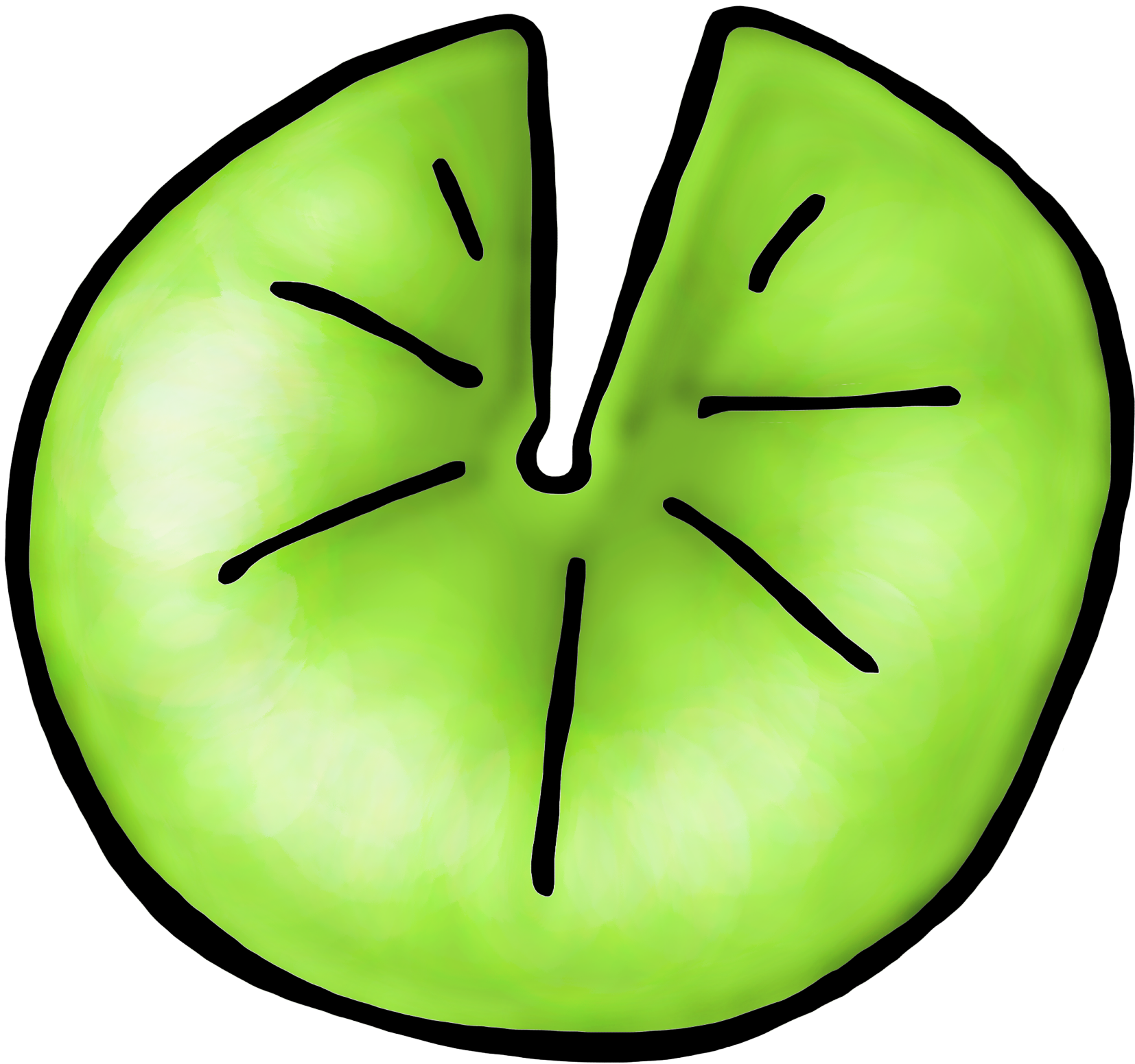


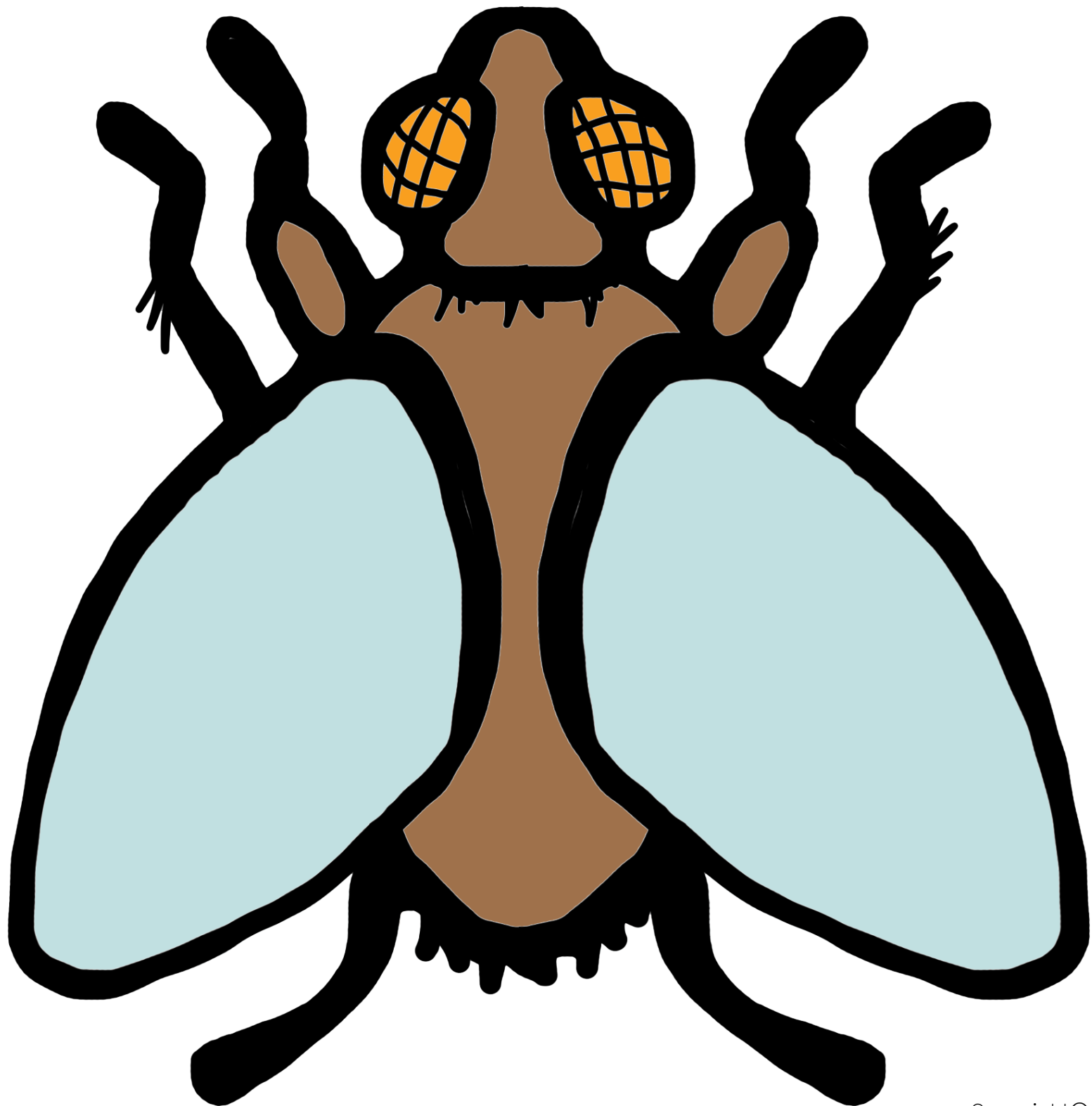








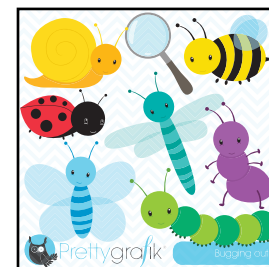




Clip art & fonts created by one or more of the following:



[Prettiful Designs](#)
[graphics by Hugs Designs](#)
[MyClipartStore.com](#)
[LitaLita](#)
[Pinkadots Elementary](#)
[A Sketchy Guy](#)
[Sonya Dehart Design](#)
[Cara's Clips](#)
[The Candy Class](#)
[The 3am Teacher](#)
[Jess Cabral](#)
[Digital Classroom Clip Art](#)
[Fancy Dog Studio](#)



teacherspayteachers.com/Store/Littlered



Graphics © First Grade Brain

[Fonts For Peas](#)
[Fonts for Teachers](#)

